

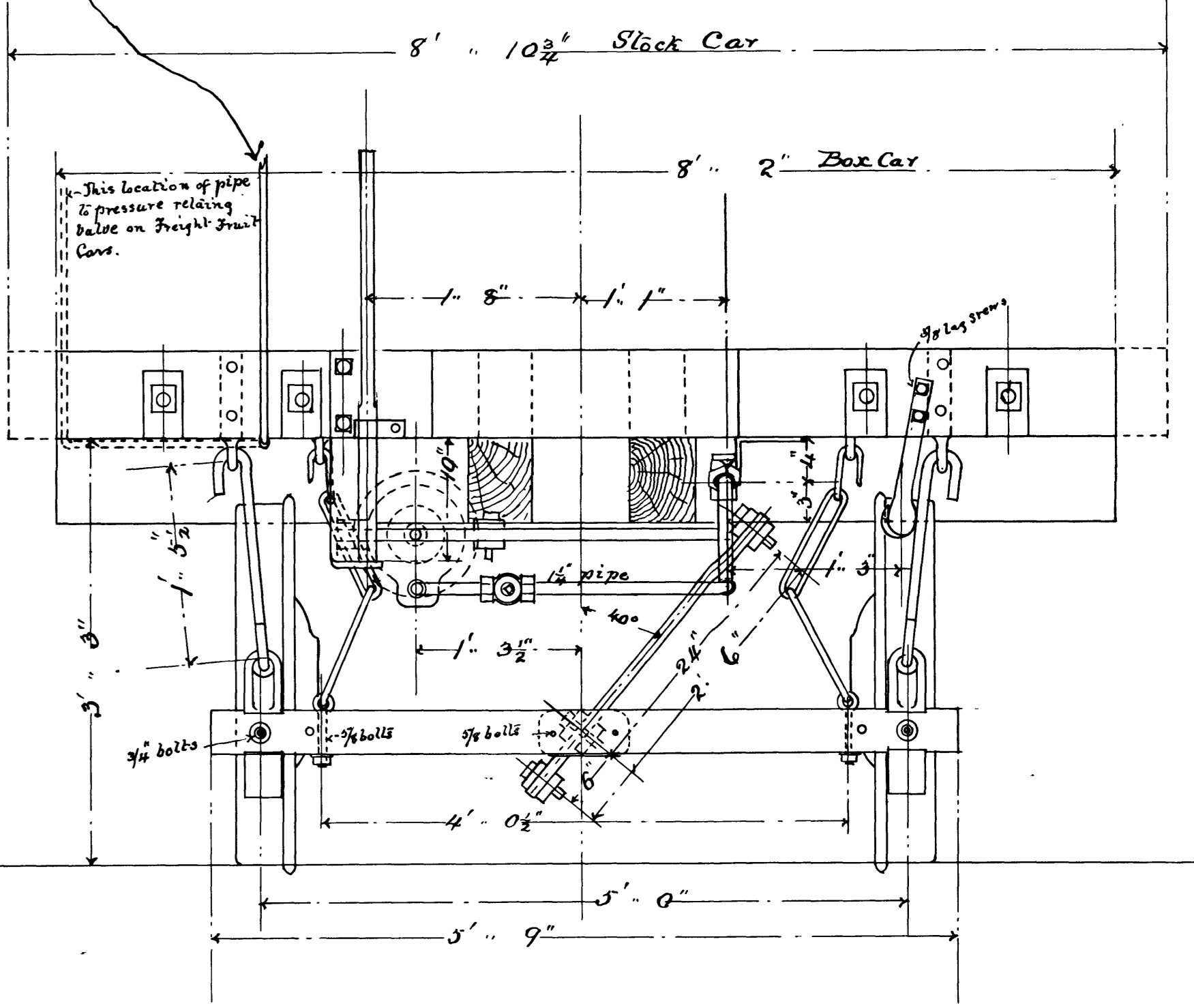
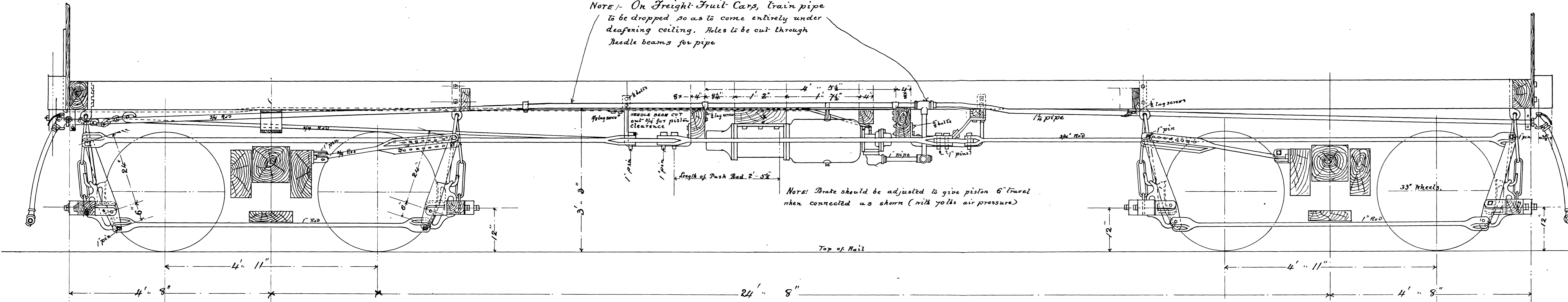
NOTE: On Freight-Fruit Cars, train pipe to be dropped so as to come entirely under deafening ceiling. Holes to be cut through needle beams for pipe

NOTE: Brake should be adjusted to give piston 6" travel when connected as shown (with 70 lbs air pressure)

List of Pattern Numbers

Brake Block	8437
" Block	6920
" Wheel	7120
Intermediate brake shaft bearing	7571
Part	7125
Patent Wheel	7081
Upper brake shaft bearing	7111
Brake beam fulcrum P	8398
" " " L	8396
" lever guide casting	8397

3/4" pipe to pressure retaining valve on end fascia of Car. For location see general plan of Car.



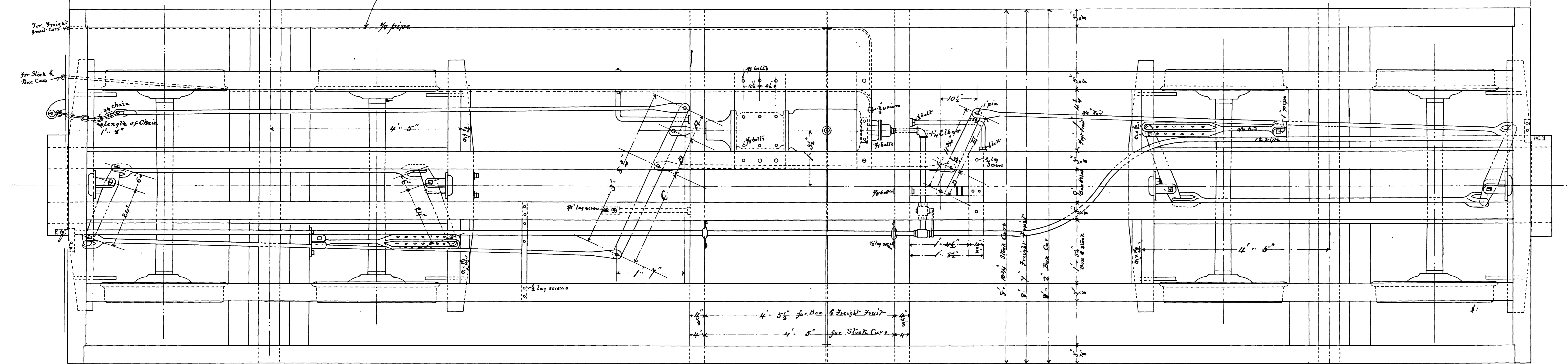
On Freight-Fruit Cars this pipe to be secured underneath deafening ceiling

Distance at A, B, C, D & E to be in accordance with height of Car. See Table.

All holes drilled 1 1/2" diameter All pins to be 1"

NOTE: Table shows lengths of Cylinder and Floating Levers, proportionate to light weight of Car

Weight of Car	Cylinder Lever			Floating Lever	
	A	B	C	D	E
1900 <sup>0</sup> to 21000 <sup>0</sup>	7"	7 1/2"	30 1/2"	4 1/2"	19 1/2"
21000 <sup>0</sup> " 23000 <sup>0</sup>	7"	7 3/4"	30"	4 3/4"	18 3/4"
23000 <sup>0</sup> " 25000 <sup>0</sup>	7"	8 1/4"	29 1/2"	5 1/4"	18 1/4"
25000 <sup>0</sup> " 27000 <sup>0</sup>	7"	8 3/4"	29"	5 3/4"	18 3/4"
27000 <sup>0</sup> " 29000 <sup>0</sup>	7"	9 1/4"	28 1/2"	5 1/2"	17 1/2"
29000 <sup>0</sup> " 31000 <sup>0</sup>	7"	9 3/4"	28"	6 1/4"	17 1/4"
31000 <sup>0</sup> " 33000 <sup>0</sup>	7"	10 1/4"	27 1/2"	6 1/2"	17 1/2"
33000 <sup>0</sup> " 35000 <sup>0</sup>	7"	10 3/4"	27"	6 3/4"	17"
35000 <sup>0</sup> " 37000 <sup>0</sup>	7"	11 1/4"	26 1/2"	7"	16 1/2"
37000 <sup>0</sup> " 39000 <sup>0</sup>	7"	11 3/4"	26"	7 1/4"	16 3/4"
39000 <sup>0</sup> " 41000 <sup>0</sup>	7"	12"	25 1/2"	7 1/2"	16 1/2"
41000 <sup>0</sup> " 43000 <sup>0</sup>	7"	12 1/4"	25 1/4"	7 3/4"	16"
43000 <sup>0</sup> " 45000 <sup>0</sup>	7"	12 3/4"	25"	8"	15 3/4"
45000 <sup>0</sup> " 47000 <sup>0</sup>	7"	13 1/4"	24 1/2"	8 1/4"	15 1/4"
47000 <sup>0</sup> and over	7"	13 3/4"	24 1/4"	8 3/4"	15 1/4"



O R & N CO  
 WESTINGHOUSE AUTOMATIC QUICK ACTION AIR BRAKE.  
 SCHEDULE H  
 STANDARD B.G. BOX, STOCK, AND FREIGHT FRUIT CARS  
 30000 lbs Capacity Cars  
 Scale 1" = 1ft.  
 Albina, Oregon, Nov 1896

