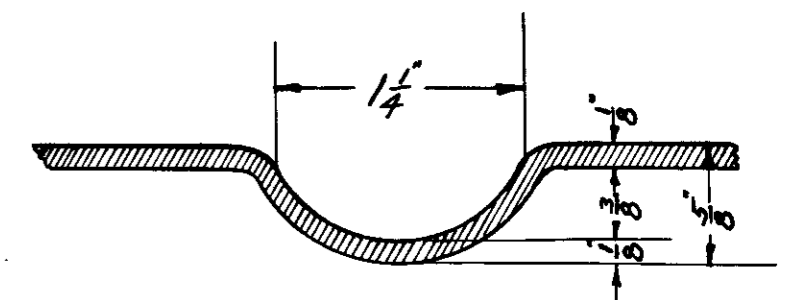
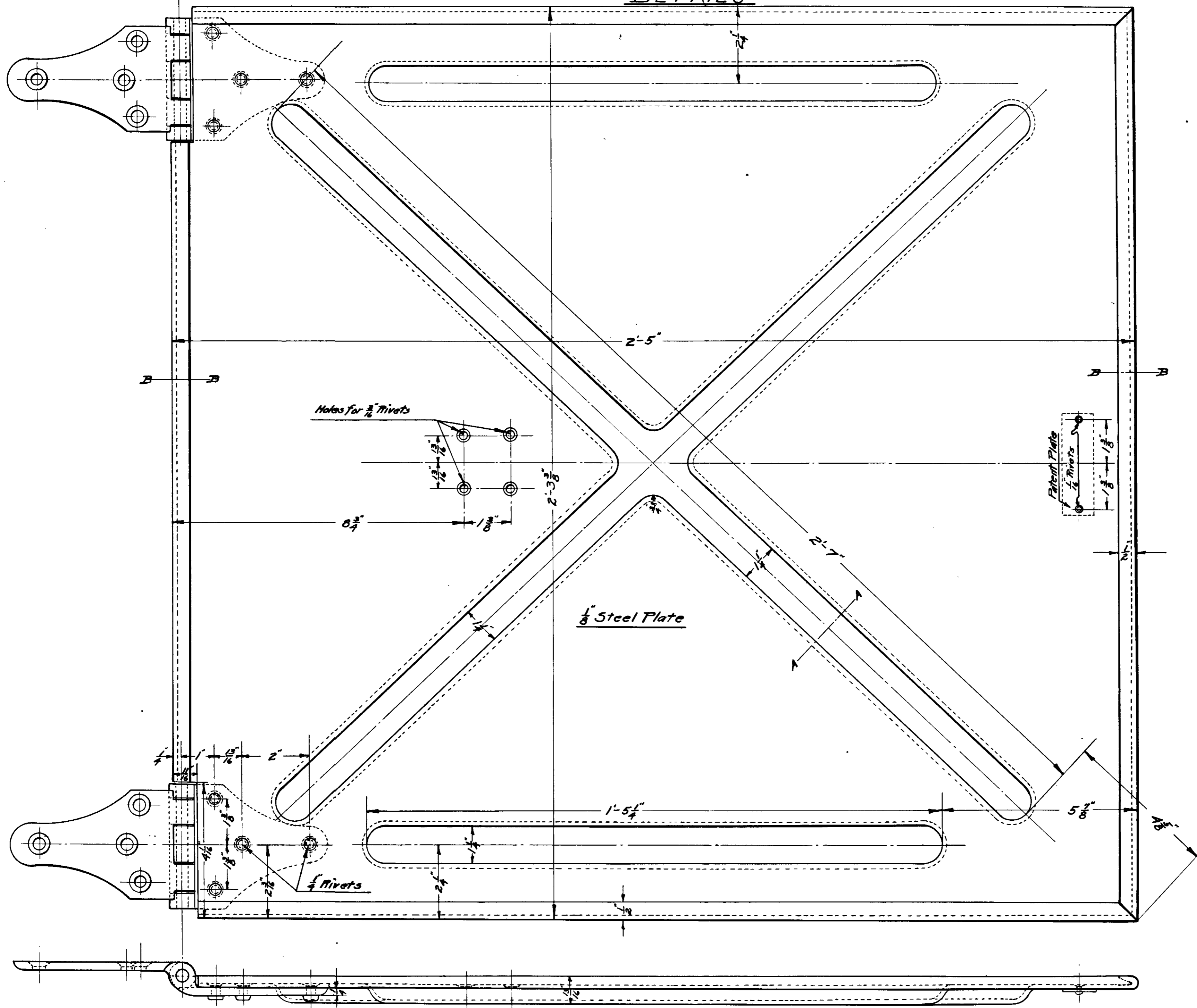
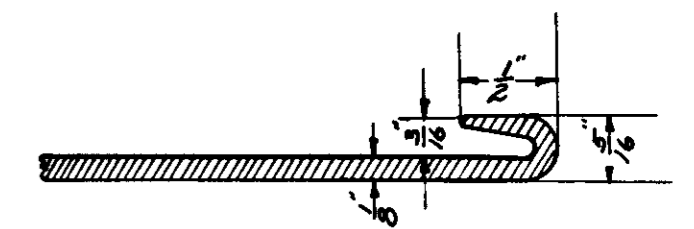


National Steel Trap Door and Lifting Device

DETAILS



Full Size Section A-A



Full Size Section B-B



THE OREGON RAILROAD & NAVIGATION CO.
AND
SOUTHERN PACIFIC CO. - LINES IN OREGON
MOTIVE POWER & CAR DEPARTMENT
APPROVED

SUPT. MOTIVE POWER
ALBINA SHOPS PORTLAND ORE.

OCTOBER 3, 1908

D 3337