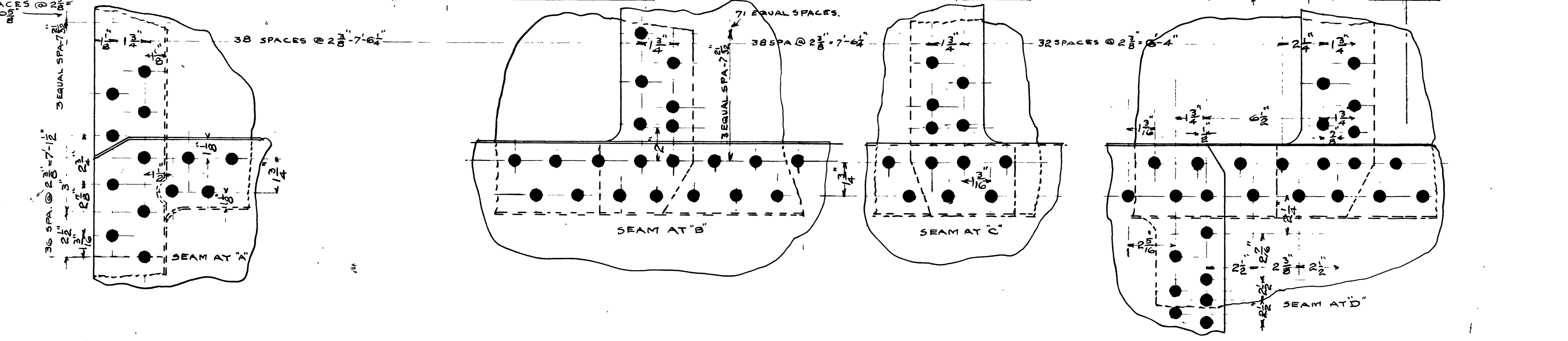
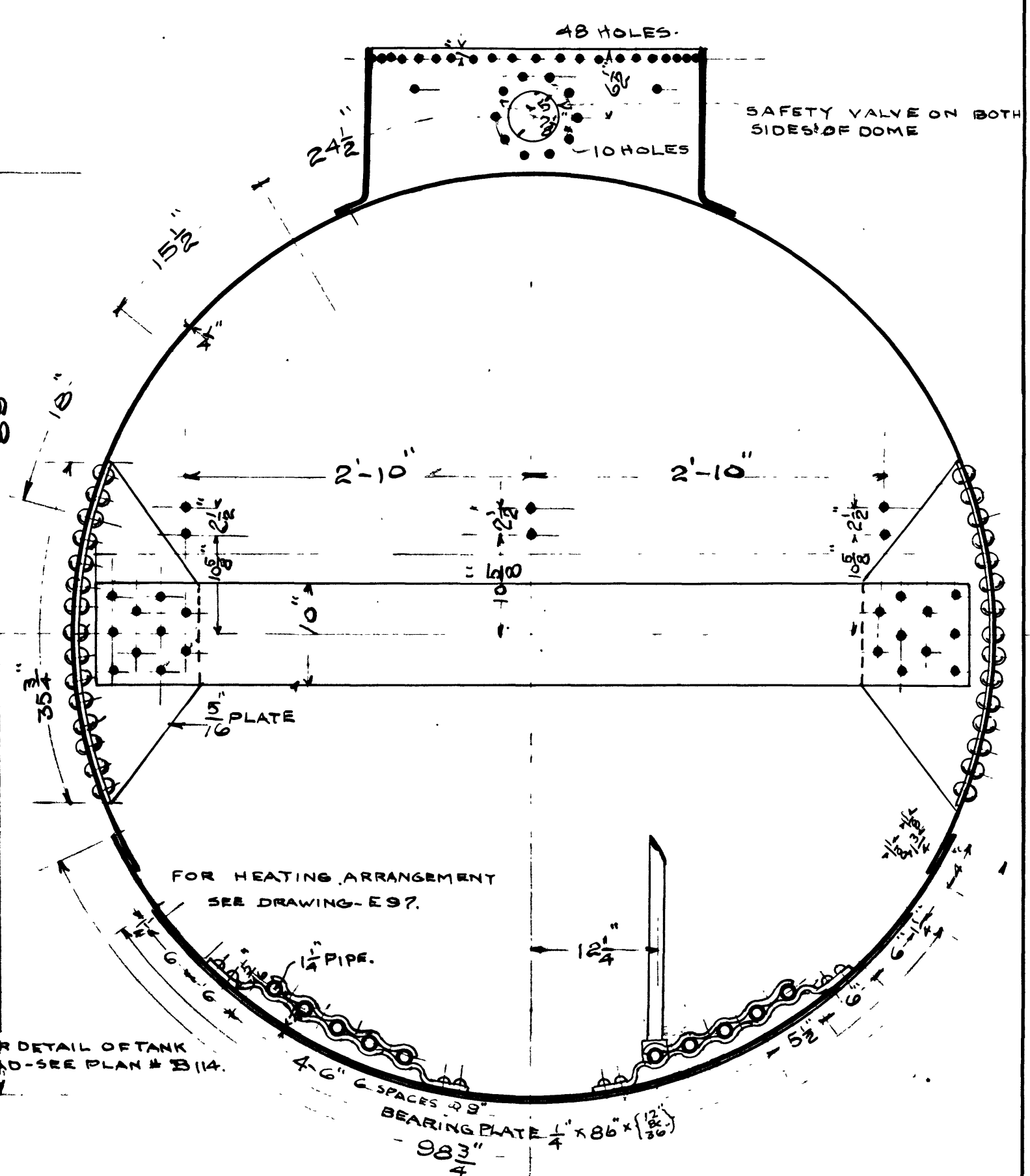
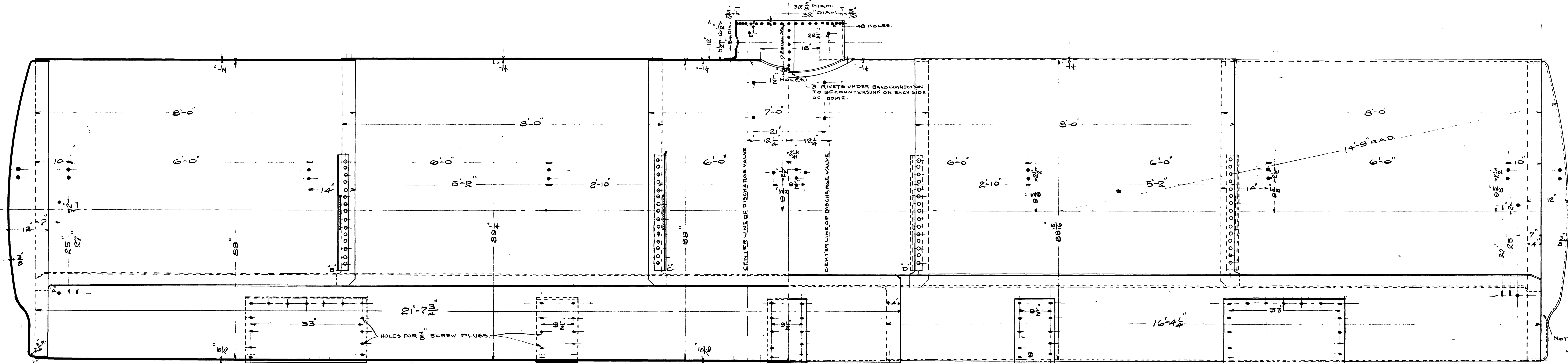


LIST OF MATERIAL SPECIFICATION NO'S.
C.C.S 19 STEEL PLATE FOR STEEL CARB
C.C.S. 20 RIVETS FOR STEEL CARB.



RIVET LIST

13	2	22	28	23	5
306					32 RIVETS
140					HEADS AND CIRCULAR SHEETS
432					" " BOTTOM SHEETS
120					CIRCULAR SEAMS
32	16				" " AND STAY BUTTS
8					HEAD SCARFS
32					INTERMEDIATE SCARFS
8					BOTTOM SHEET
7/8					LONGITUDINAL SEAMS
30					DOMES AND SHELL
8				48	" " COVER
8					" " VERTICAL SEAM
4					GRAB IRONS AND DOME SHEET
12					" " " TANK "
28					HAND RAIL SUPPORTS AND CIRCULAR SHEETS
12					" " " TANK HEAD "
18					END STRAP SUPPORT ANGLES & TANK HEAD
30					STAY PLATES AND BUTTS
4					SAFETY VALVE AND
75					BOTTOM SHEET SEAM
2					LADDER SUPPORTS TANK SHEETS
1340	405	364	36	48	TOTAL

BOLT LIST

NO. OF CAR	DESCRIPTION
140	SCREW HEADS THREADED SAME AS STAY BOLT
2	SCREW HEADS THREADED SAME AS STAY BOLT LONG ENOUGH TO TAKE STEAM PIPE BRACKET

NOTE - ALL HOLES 1/2\"/>

OIL TANK.
Mechanical Department
S. P. L. A. & S. L. Ry.
Los Angeles Cal. Jan-31-1907.
Approved - *J. L. Durison*
Superintendent Machinery