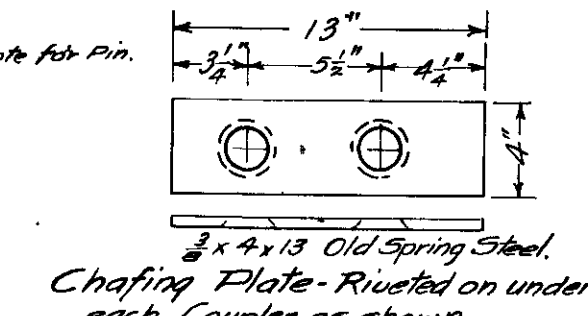
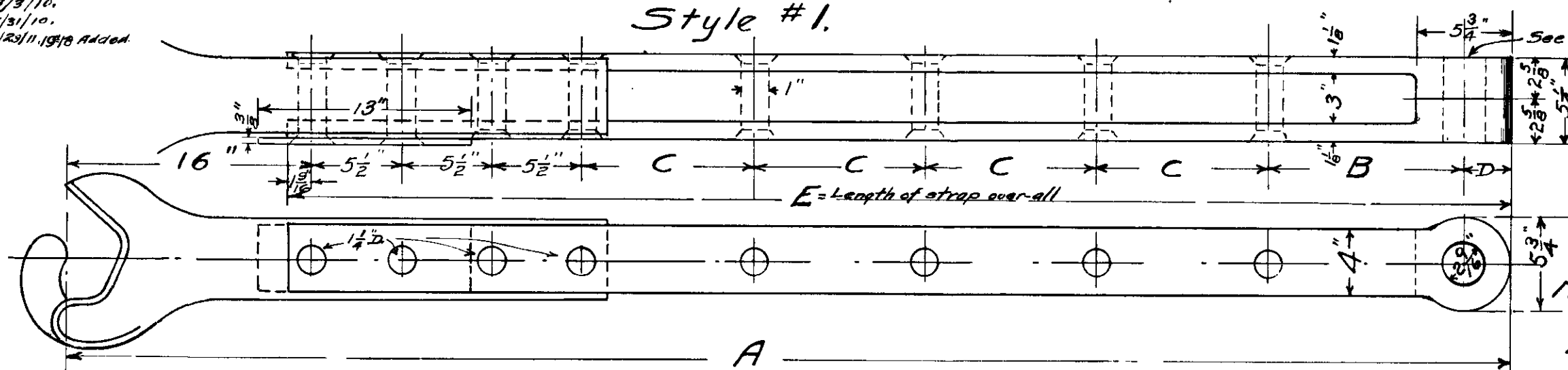


Req. #9-422 to 430 Inclusive.

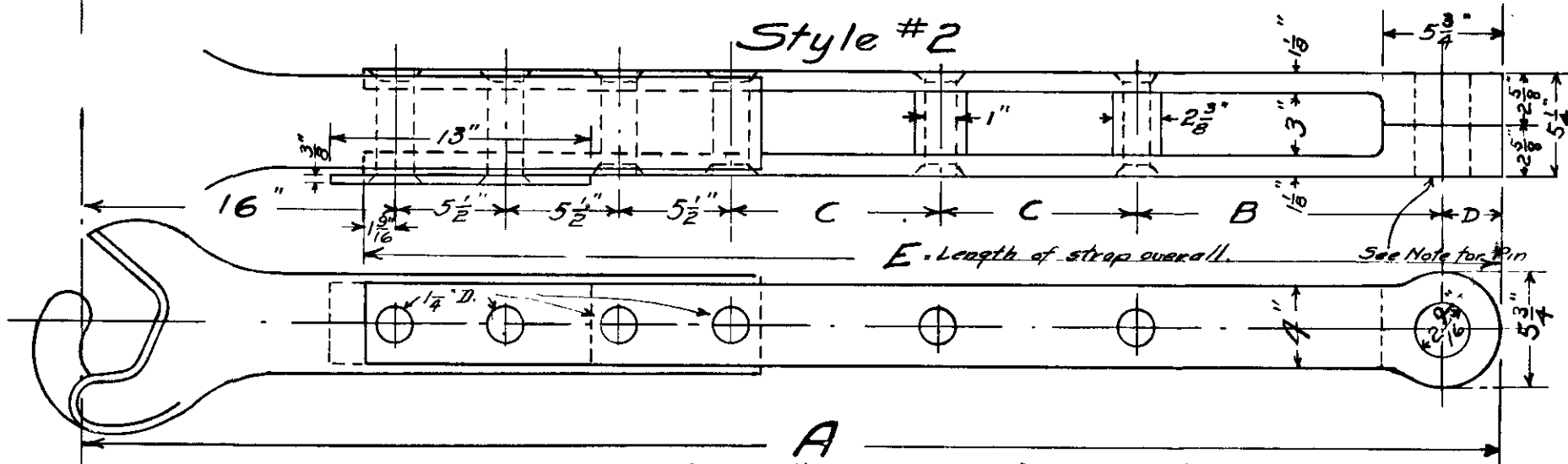
Revised "A" 6/14/09. Note on Rivet holes.
 "B" 3/3/10.
 "C" 3/3/10.
 "D" 6/23/11. 1918 Added.

Style #1.

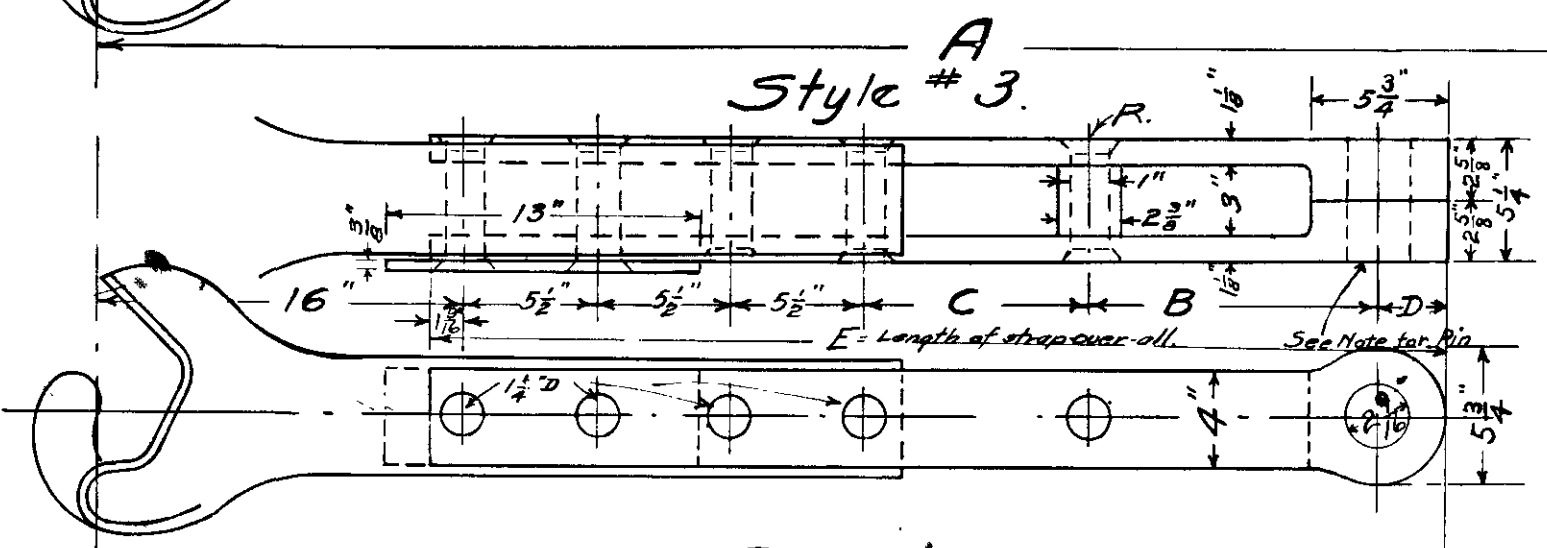


Note -
 All Pins 2 1/2" dia. See Drawing for Drawbar Yokes & Bolts D790.
 All rivet holes to be countersunk.

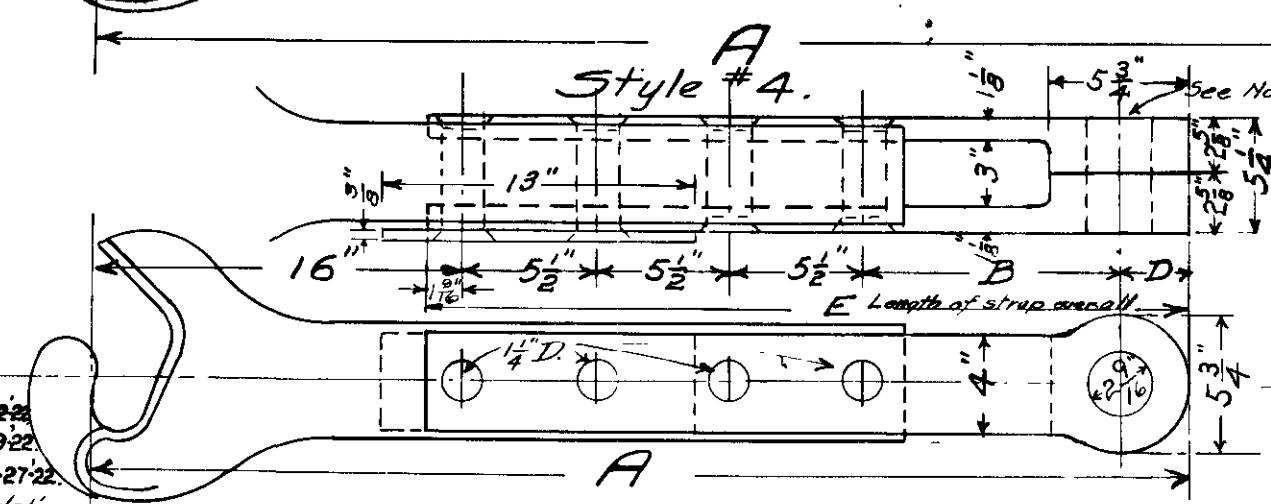
Style #2



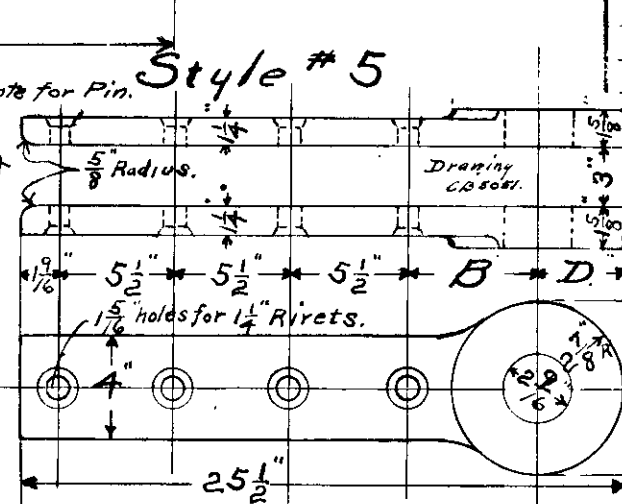
Style #3



Style #4



Style #5



No.	Class of Car.	Style	A	B	C	D	E	Remarks.
1	163, 166.	4	3'-4"	4'-5 7/8"	NONE	2 7/8"	2'-1 9/16"	
2	154 to 162	4	3'-4"	4'-5 7/8"	"	"	2'-1 9/16"	Steel Underframe
3	152	"	3'-10 3/4"	11 3/8"	"	"	2'-8 5/16"	
4	153	3	4'-8 3/8"	10 5/8"	10 3/8"	"	3'-5 15/16"	
5	150	"	5'-0"	12 1/4"	12 3/8"	"	3'-9 9/16"	
6	303, & 1 to 34.	2	6'-0"	14"	11 1/2"	"	4'-9 15/16"	Make straps to fit old Couplers.
7	101	2	5'-8"	10 7/8"	10 7/8"	"	4'-5 15/16"	Kitchen End.
8	101	1	7'-4 1/2"	11 5/8"	10 3/8"	"	6'-2 1/16"	Observation End.
9	200	3	5'-0"	12 1/4"	12 3/8"	"	3'-9 9/16"	Baggage End.
10	(200, 300, 307)	2	5'-9 1/2"	14 7/8"	9 5/8"	"	4'-7 1/16"	
"	315, 500, 514	"	"	"	"	"	"	
"	524, 600, 700,	"	"	"	"	"	"	
"	708, 711.	"	"	"	"	"	"	
10	400	"	5'-10 1/2"	15 7/8"	"	"	4'-8 1/16"	
11	102	"	6'-3"	13 3/8"	13 3/4"	"	5'-0 1/16"	Kitchen End.
10	102	"	5'-10 1/2"	15 7/8"	9 5/8"	"	4'-8 1/16"	Observation End.
12	80-87, 88 & 89	4	3'-4"	4'-7 7/8"	NONE	"	2'-1 9/16"	Steel Underframe.
13	202 only	3	4'-6"	19"	NONE	"	3'-4"	one End Only.
14	103	1	7'-7 1/2"	11 3/8"	11 1/8"	"	6'-5 1/16"	Observation End.
2	205 & 206	4	3'-4"	4'-5 7/8"	NONE	"	2'-1 9/16"	Baggage End.
15	205 & 206	1	6'-1 1/2"	8 1/4"	8 1/4"	"	4'-7 1/2"	Vestibule End.
10	103	2	5'-10 1/2"	15 7/8"	9 5/8"	"	4'-8 1/16"	Kitchen End.



COUPLER EXTENSION STRAPS.
 FOR PASSENGER CARS.

S.P., L.A., & S.L. R.R.
 Los Angeles Cal. June 8, 09.

Approved F. E. Harrison
 Supt. Machy.

J - Revision 5-12-09
 I - Revision 5-9-09
 H - Revision 2-27-09
 E - Revision 4-3-12

B
 413
 J