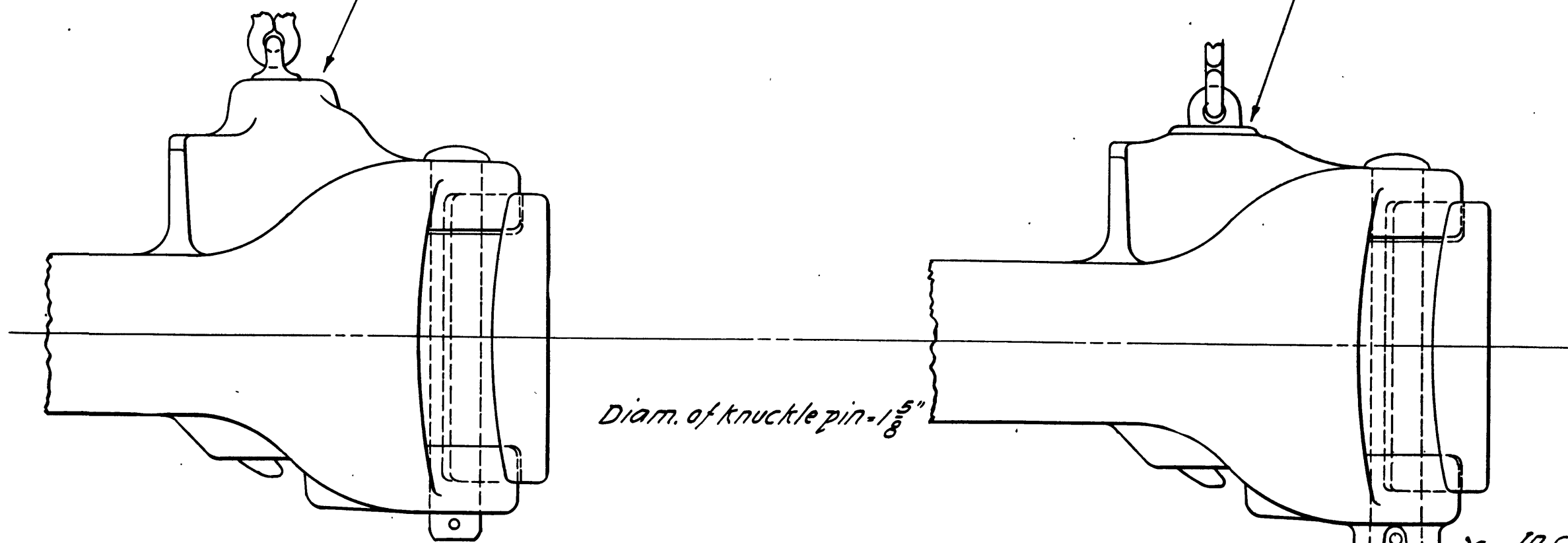


HIGH CLIMAX COUPLER.

LOW CLIMAX COUPLER.

OUR PRESENT STANDARD.

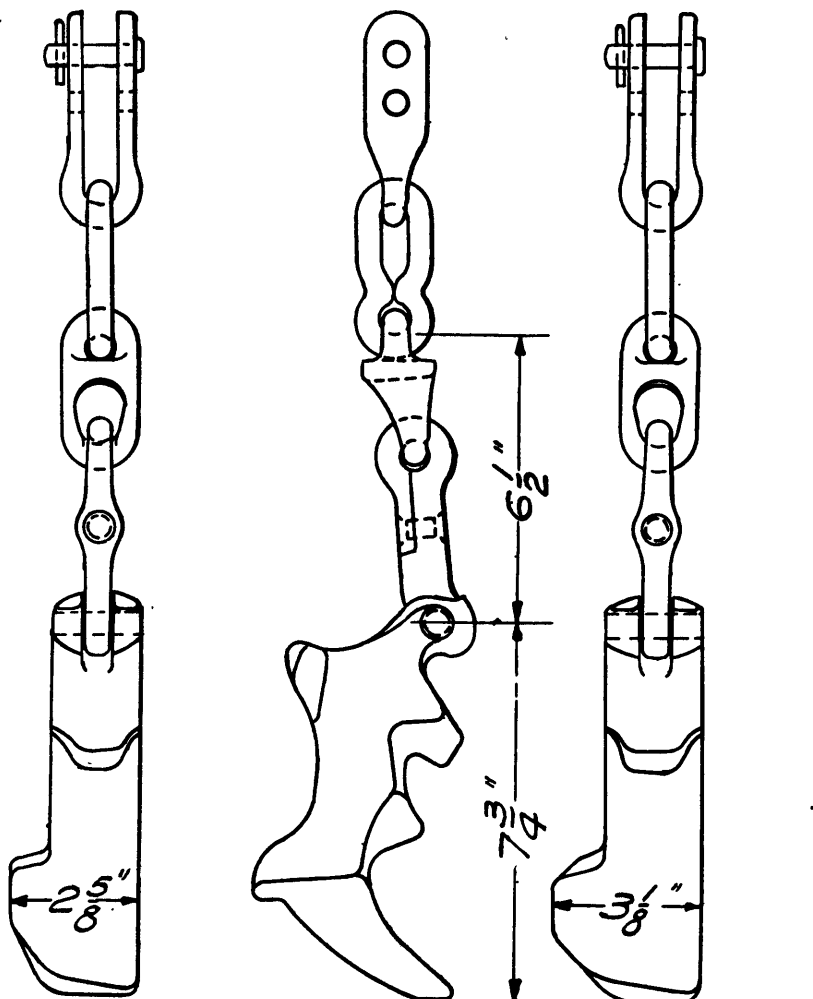


*In case knuckle pin breaks, the pin support "X" prevents the lower section from dropping out.*

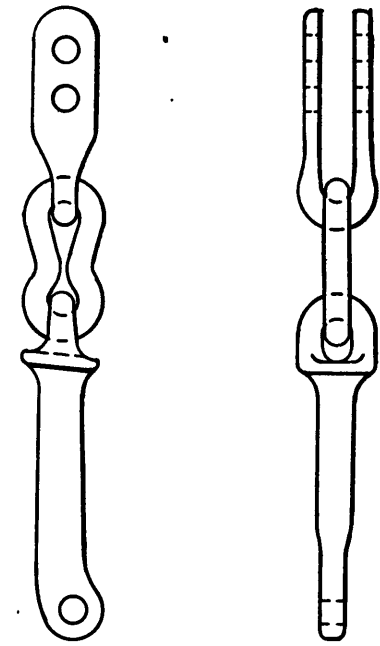
CHAIN H

CHAIN G

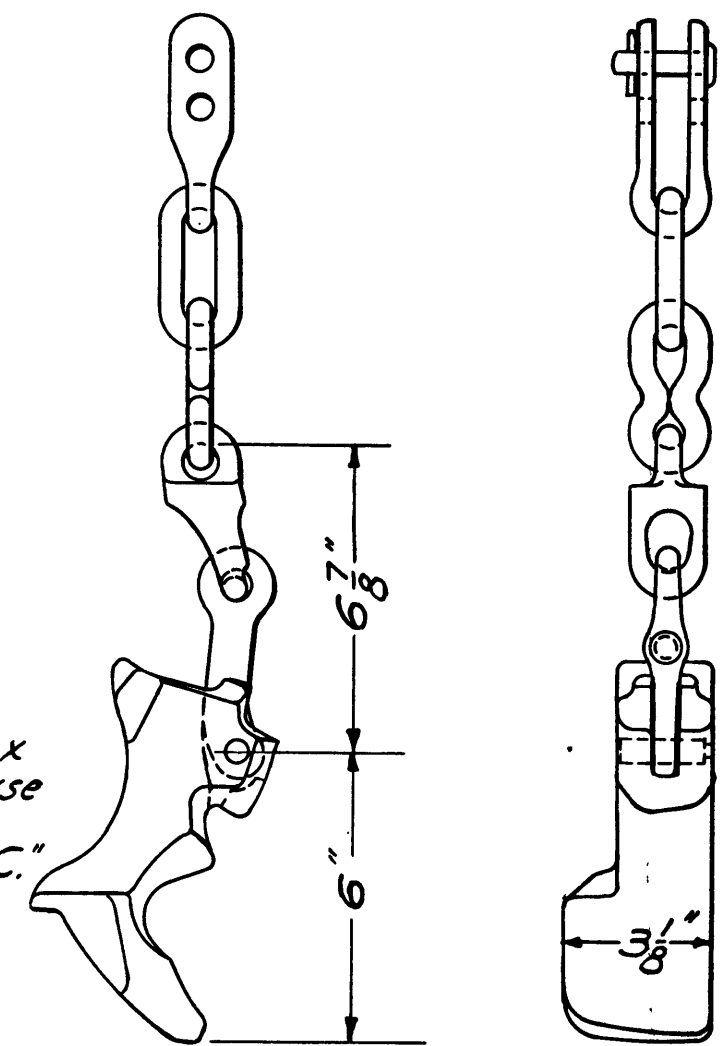
CHAIN I



NARROW LOCK **A**      WIDE LOCK **B**  
FOR HIGH CLIMAX COUPLER.



*In ordering chains for high Climax couplers, specify chain "H" as the use of chain "G" has been discontinued. In ordering locks, specify "A, B or C."*



LOCK **C**  
FOR LOW CLIMAX COUPLER.



THE NATIONAL MALLEABLE CASTINGS CO.  
CLIMAX COUPLERS, LOCKS  
AND CHAINS.

CLEVELAND, OHIO. MARCH, 16 1906.

APPROVED

*H. E. Coffin* 1064