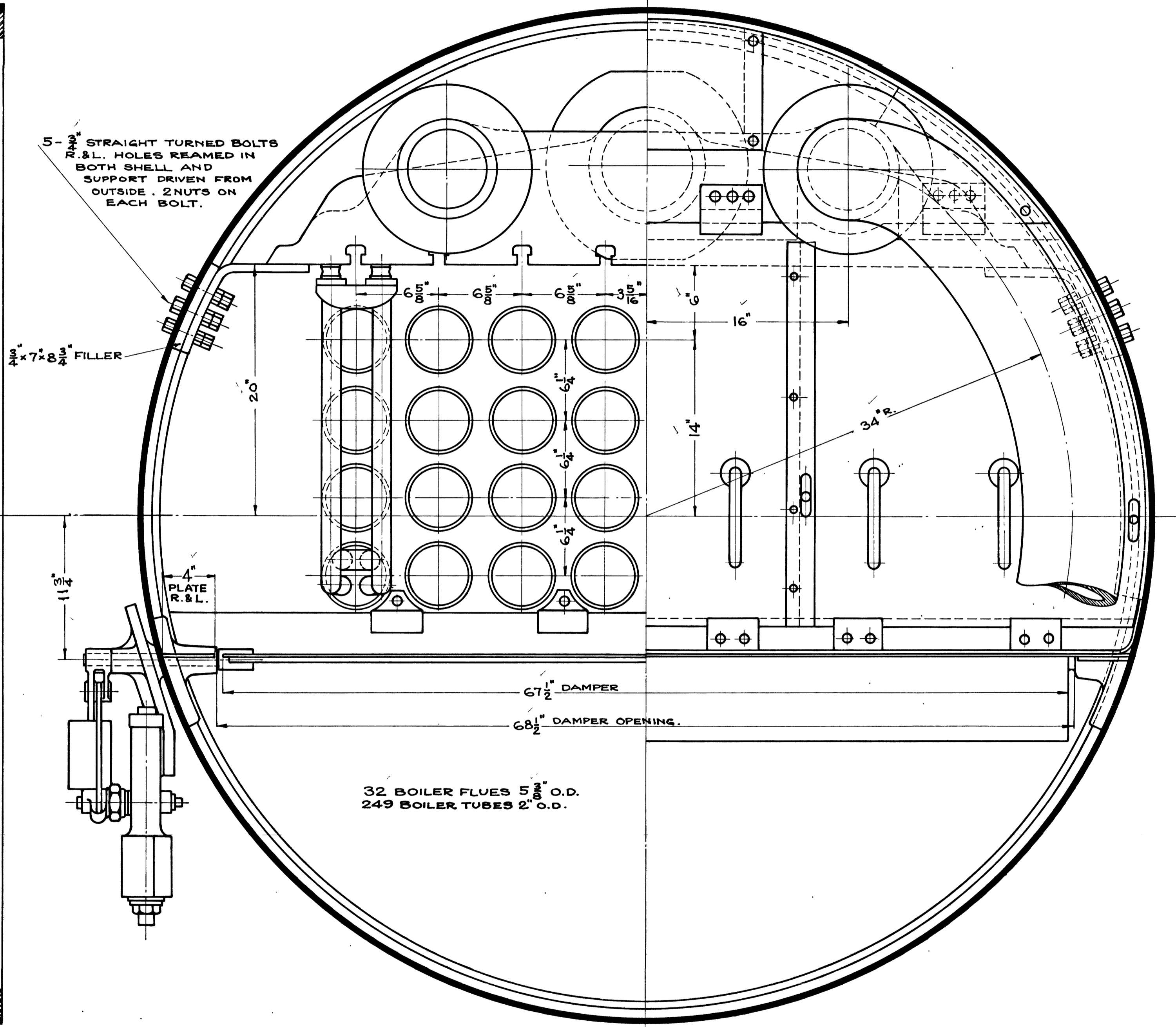
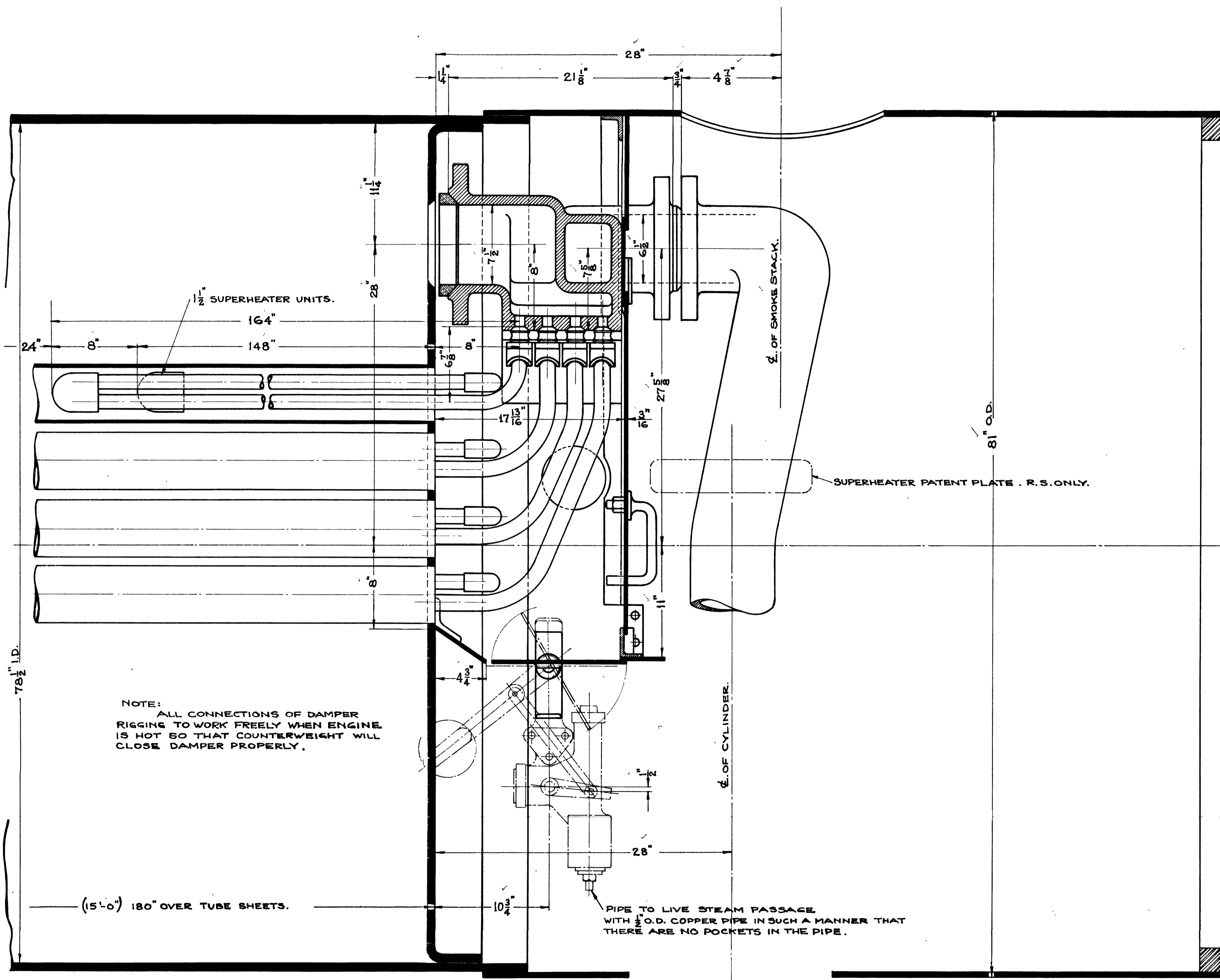


USED ON
LOCOMOTIVES
CLASSES
6009-
6086.



CORRECT *H. Weaver*
MECH'L. ENGR.

APPROVED *J. P. ...*
SUPV. M.P. DIV.

LOS ANGELES & SALT LAKE RR.
SUPERHEATER ARRANGEMENT.

LOS ANGELES, CAL. JAN. 16, 1923
DRAWING E-1535

NO.	REVISIONS

