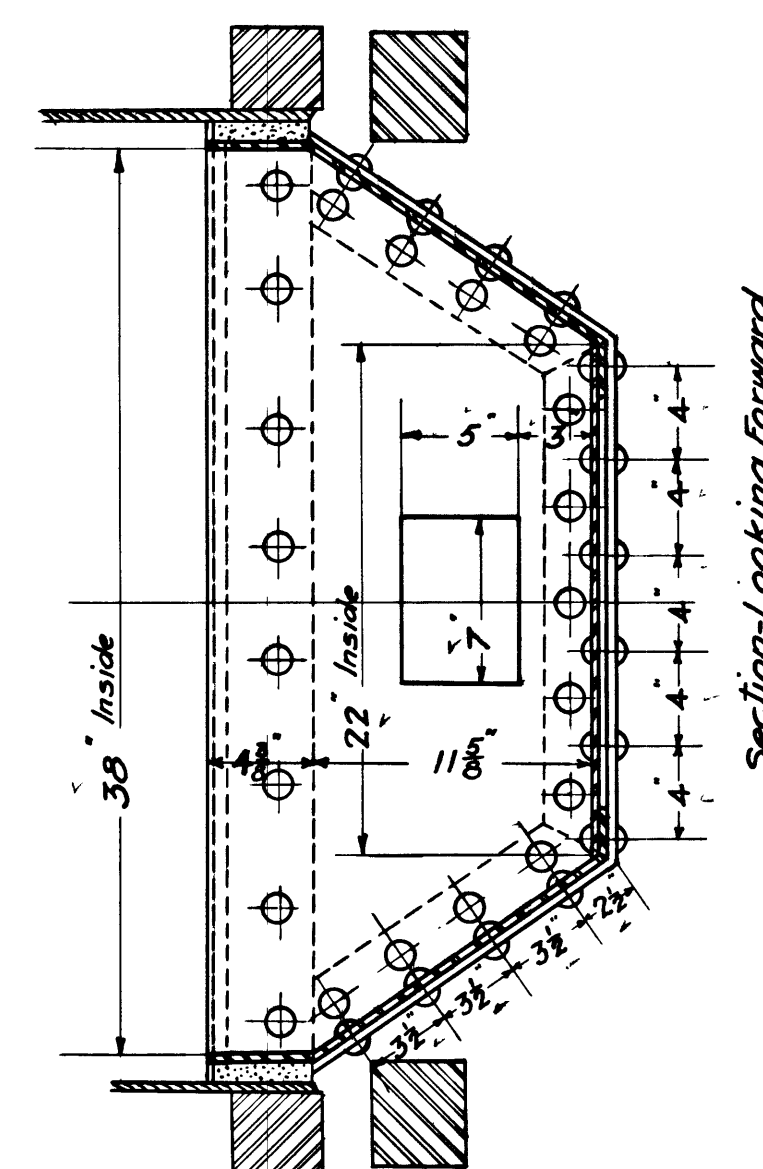
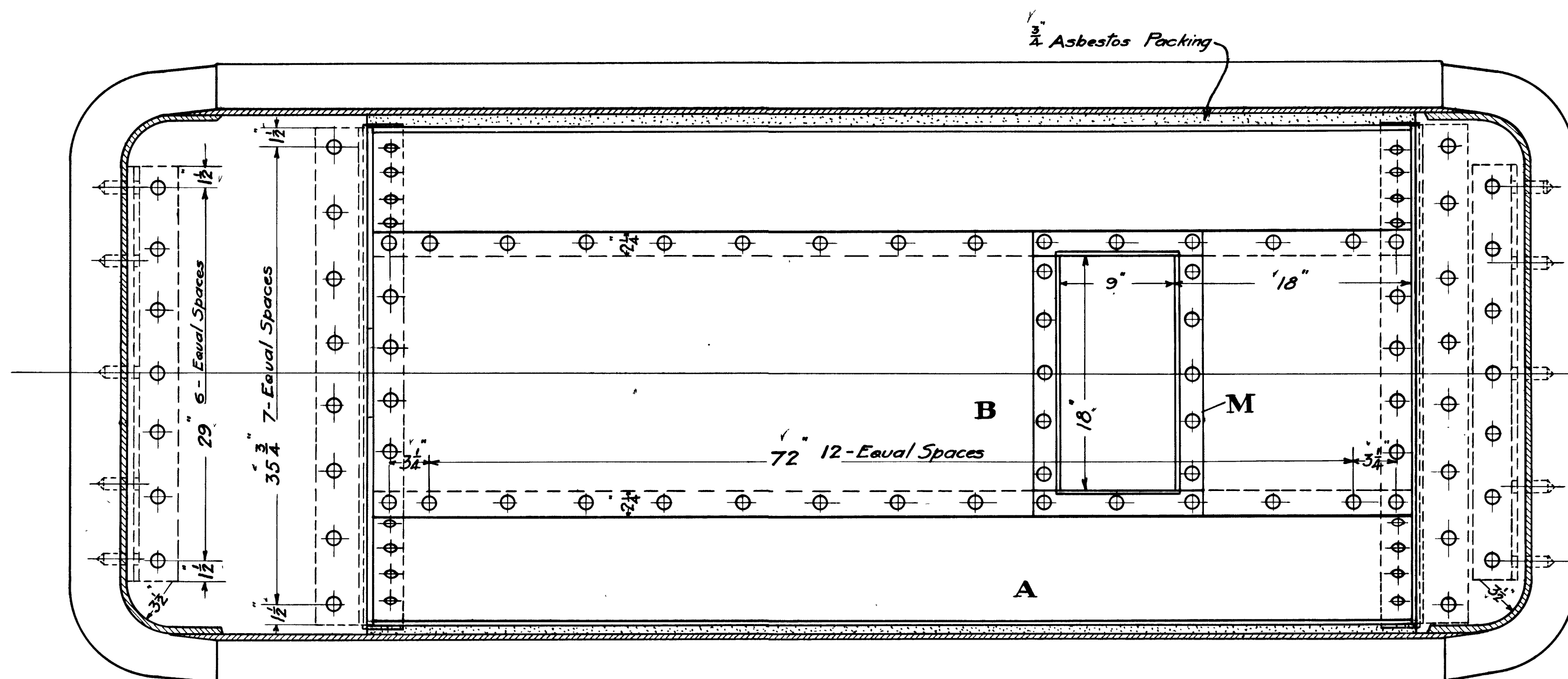
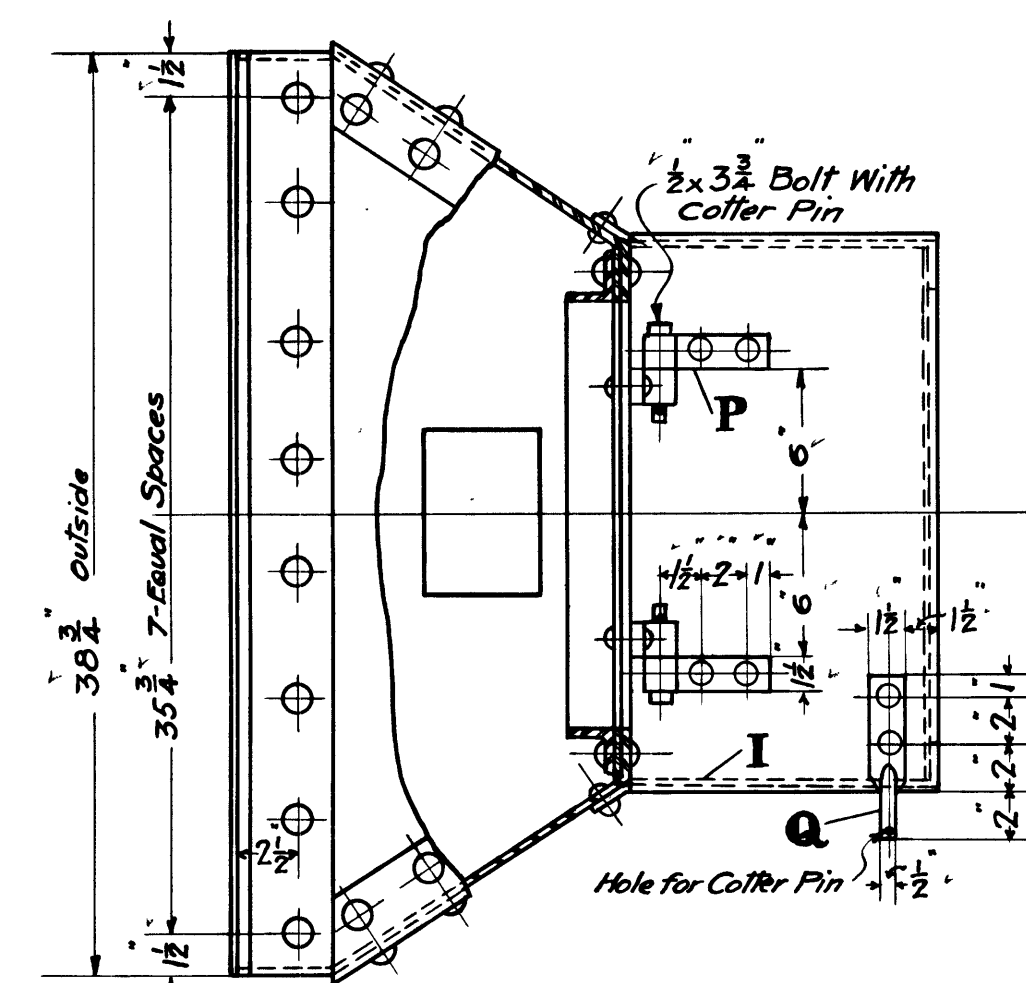


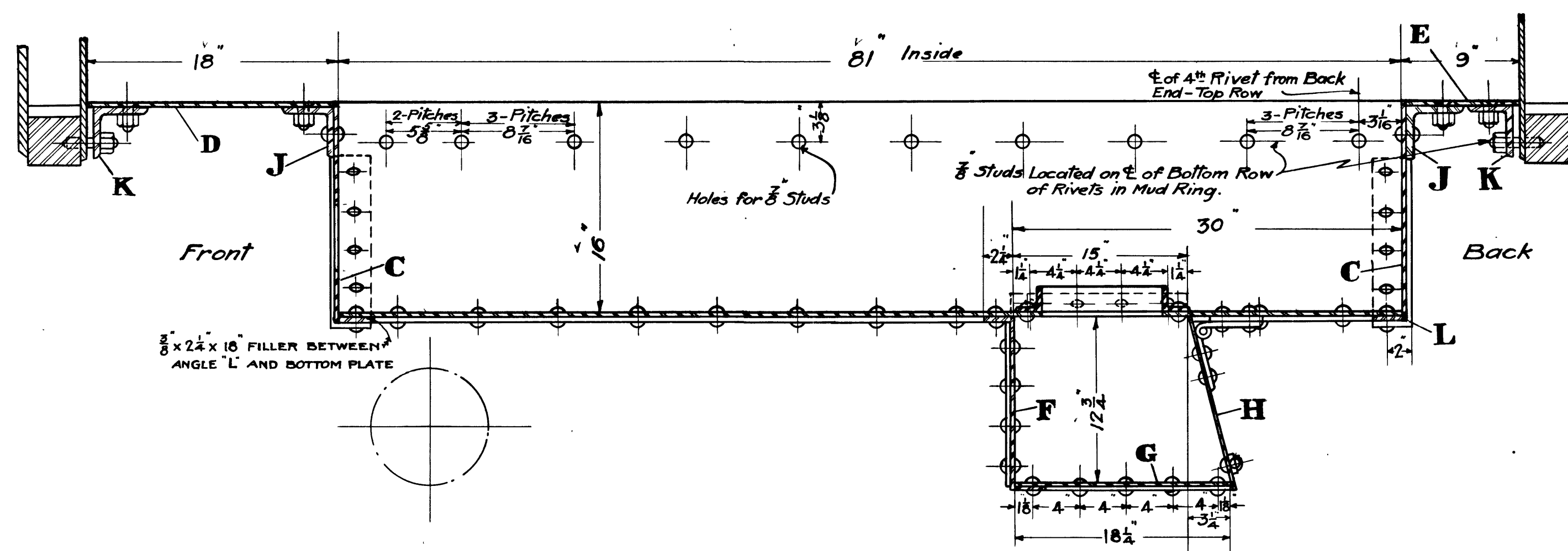
Front End



Section-Looking Forward



Back End



ALL BOLTS  $\frac{3}{4}$ " DIA. Csk. Heads  
ALL STUDS  $\frac{3}{8}$ " DIA.  
ALL RIVETS IN PAN  $\frac{3}{8}$ " DIA.  
ALL RIVETS IN HOPPER  $\frac{1}{2}$ " DIA.  
ALL RIVET HEADS INSIDE PAN TO BE HAMMERED FLAT.

BILL OF MATERIAL					
MARK	DESCRIPTION	NO. REQ.	MARK	DESCRIPTION	NO. REQ.
A	SIDE PLATE	2	J	4x4x1/2 ANGLE 36 1/2 LONG	2
B	BOTTOM PLATE	1	K	4x4x1/2 " 32 "	2
C	END PLATE	2	L	3x3x3/8 " 55 "	2
D	TOP PLATE-FRONT	1	M	2x2x3/8 " 64 "	1
E	TOP PLATE-BACK	1	N	1/2x2x27 1/2 IRON	1
F	END PLATE-HOPPER	1	O	1/2x2x7 1/2 "	1
G	BOTTOM PLATE	1	P	1/2x1 1/2x0 "	4
H	DOOR PLATE	1	Q	1/2x1 1/2x7 "	1
I	SIDE PLATE	2			

Los Angeles & Salt Lake R.R.  
Fire Pan

Los Angeles Cal. Nov. 1<sup>st</sup> 1922.

DRAWING E-1343

Revisions

No.	Description

CORRECT *H. C. Weaver*  
MECH. ENGR.  
APPROVED *L. W. Johnson*  
SUPT. M.P. & M.

