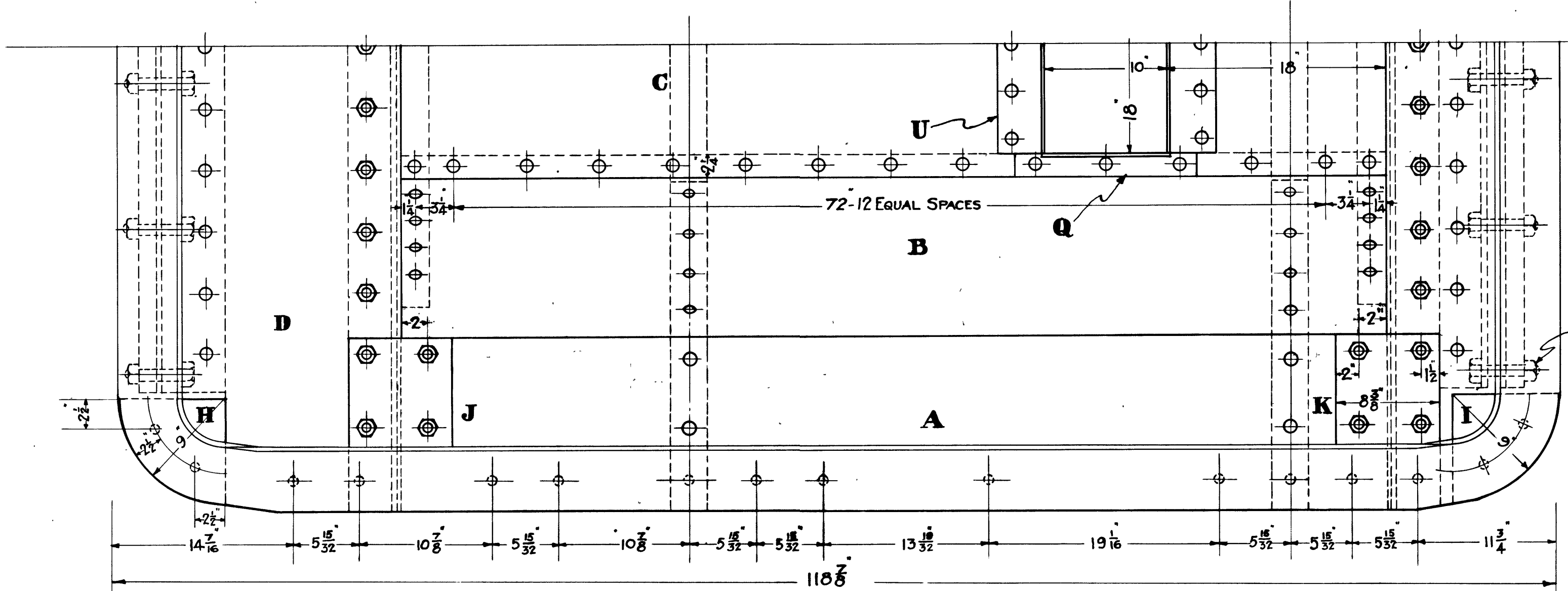
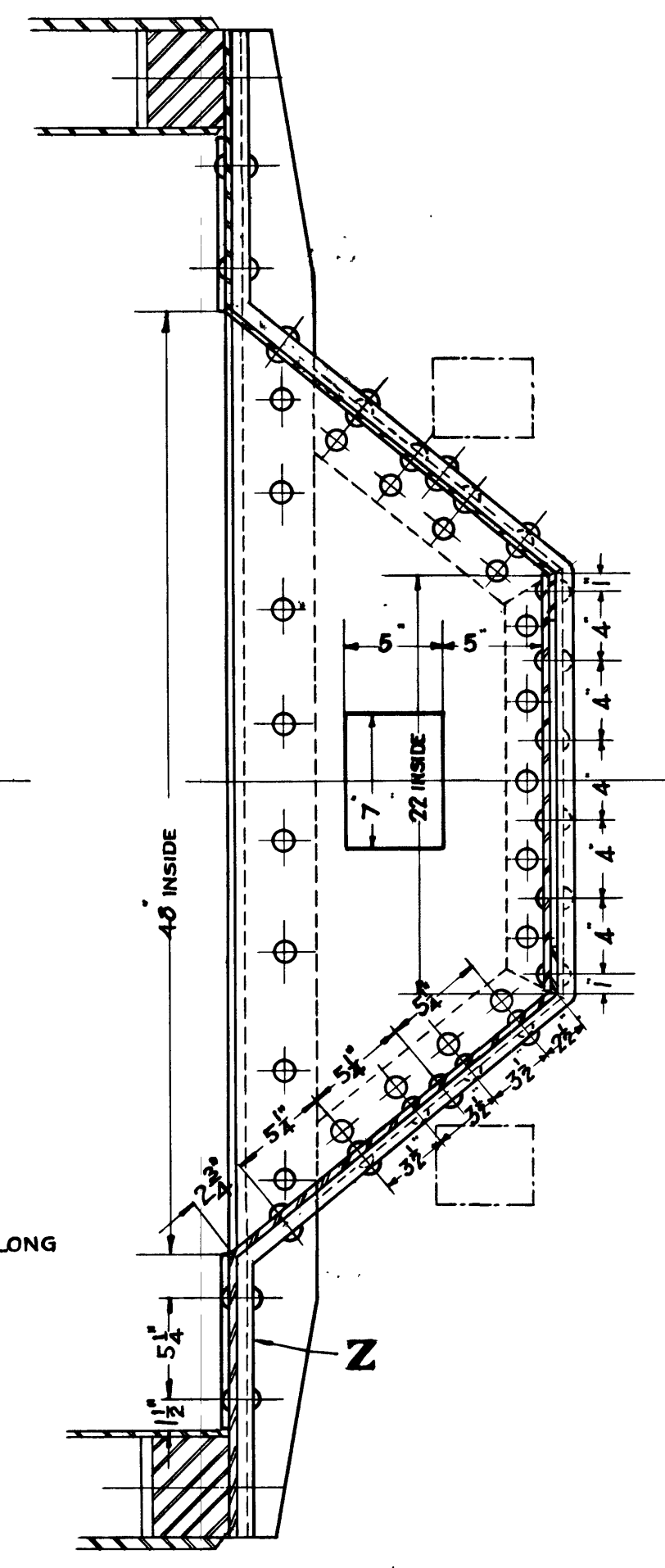


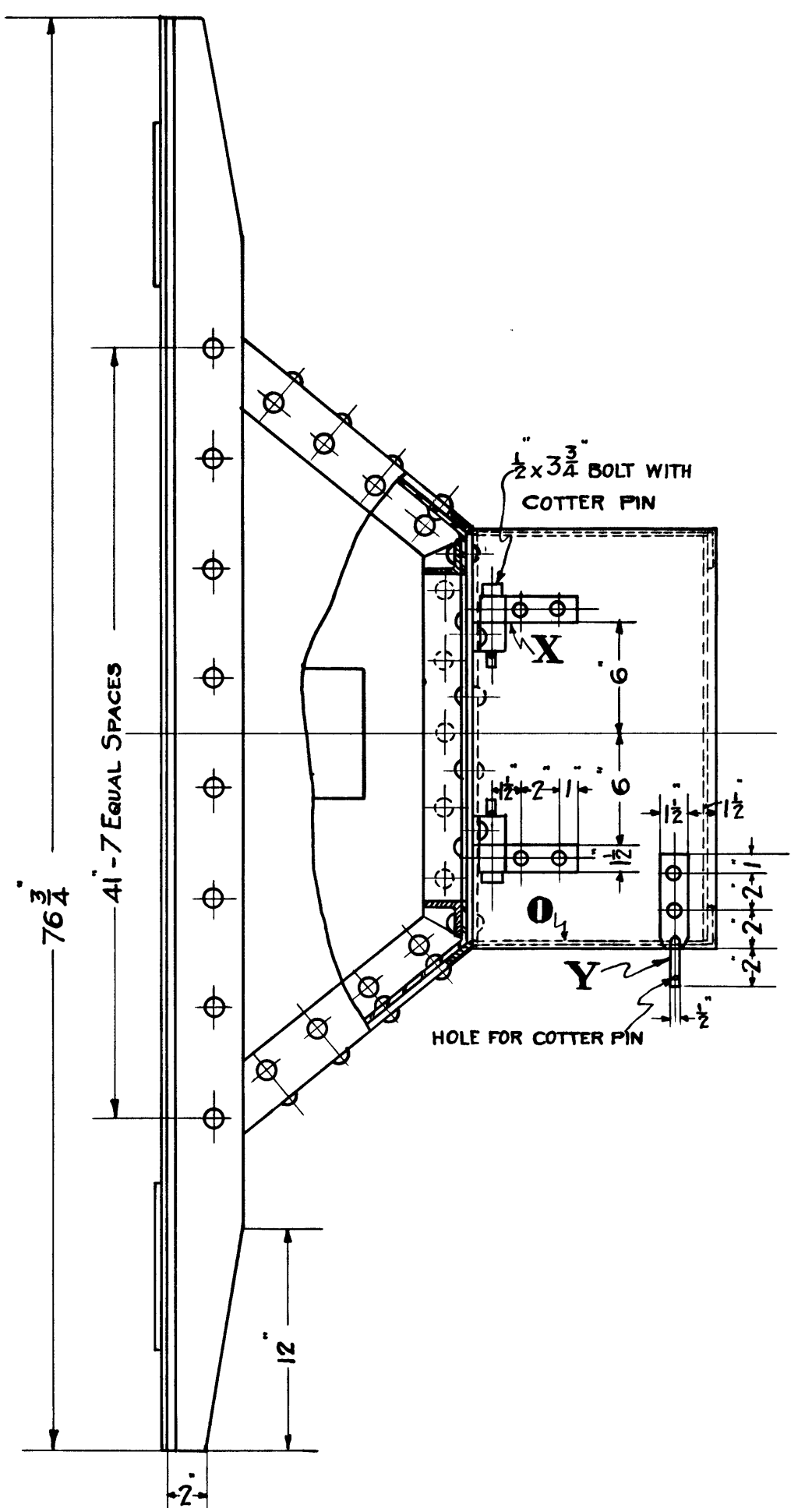
FRONT END



1 BOLTS 5" LONG

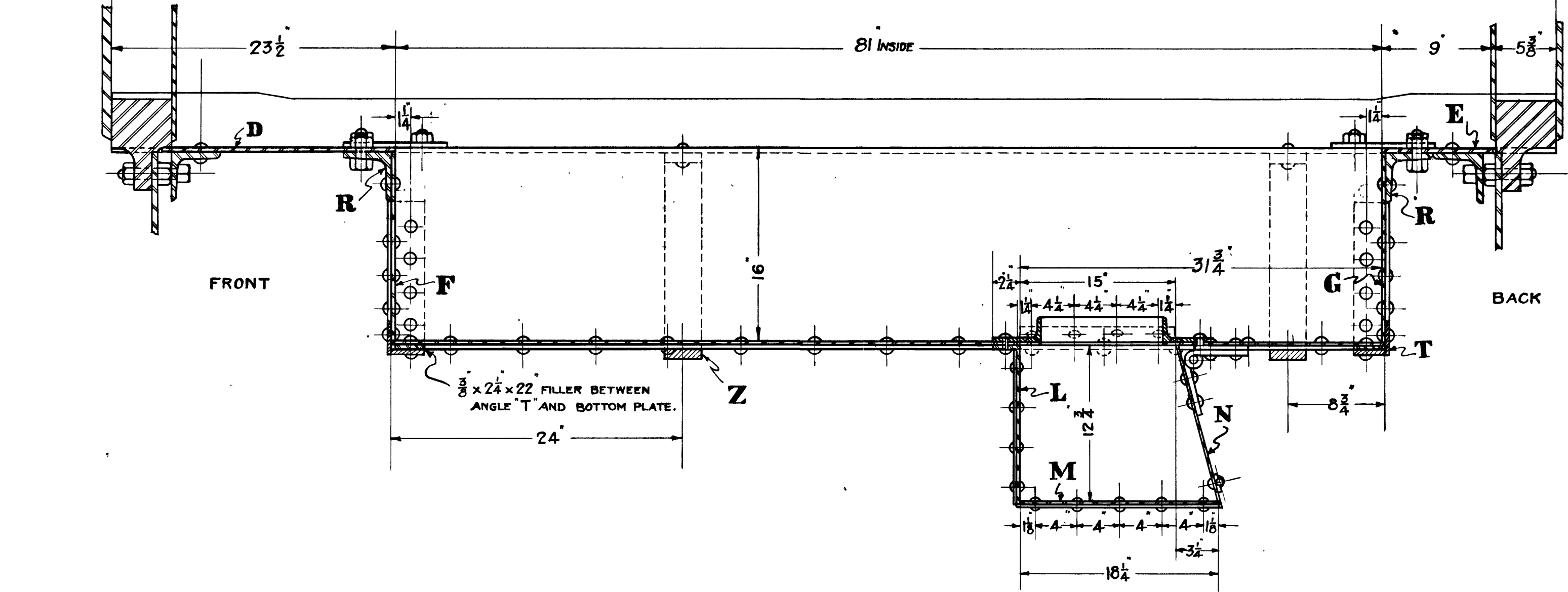


SECTION - LOOKING FORWARD



BACK END

ALL BOLTS 7/8" DIA.
ALL STUDS 5/8" DIA.
ALL RIVETS IN PAN 3/8" DIA.
ALL RIVETS IN HOPPER 1/2" DIA.
NOTE: ALL RIVETS INSIDE PAN TO BE HAMMERED FLAT.



FRONT

BACK

| BILL OF MATERIAL | | | | | |
|------------------|-----------------------|----------|------|----------------------------|----------|
| MARK | DESCRIPTION | NO. REQ. | MARK | DESCRIPTION | NO. REQ. |
| A | TOP PLATE - SIDE | 2 | | | |
| B | SIDE PLATE | 2 | | | |
| C | BOTTOM PLATE | 1 | Q | 2x2x3/8 ANGLE 30" LONG | 1 |
| D | TOP PLATE - END | 1 | R | 4x4x1/2 ANGLE 76 1/2" LONG | 2 |
| E | TOP PLATE - END | 1 | S | | |
| F | END PLATE | 1 | T | 3x3x3/8 ANGLE 57" LONG | 2 |
| G | END PLATE | 1 | U | 2x6x3/8 ANGLE 36" LONG | 1 |
| H | CORNER PLATE - FRONT | 2 | | | |
| I | CORNER PLATE - REAR | 2 | | | |
| J | BUTT PLATE | 2 | V | 1/2 x 2 x 24" IRON | 1 |
| K | BUTT PLATE | 2 | W | 1/2 x 2 x 7 1/2" IRON | 1 |
| L | END PLATE - HOPPER | 1 | X | 1/4 x 1 1/2 x 8" IRON | 4 |
| M | BOTTOM PLATE - HOPPER | 1 | Y | 1/4 x 1 1/2 x 7" IRON | 1 |
| N | END PLATE - HOPPER | 1 | Z | 1/2 x 4 x 98" IRON | 2 |
| O | SIDE PLATE - HOPPER | 2 | | | |

LOS ANGELES & SALT LAKE R.R.
FIRE PAN
LOS ANGELES, CAL. DEC. 18-1922

| DRAWING | REVISIONS |
|---------|--------------|
| E-1347 | 11-15-1923 A |

CORRECT *H.C. WEARER*
MECH. ENGR.
APPROVED *[Signature]*
SPT. P. & M.

