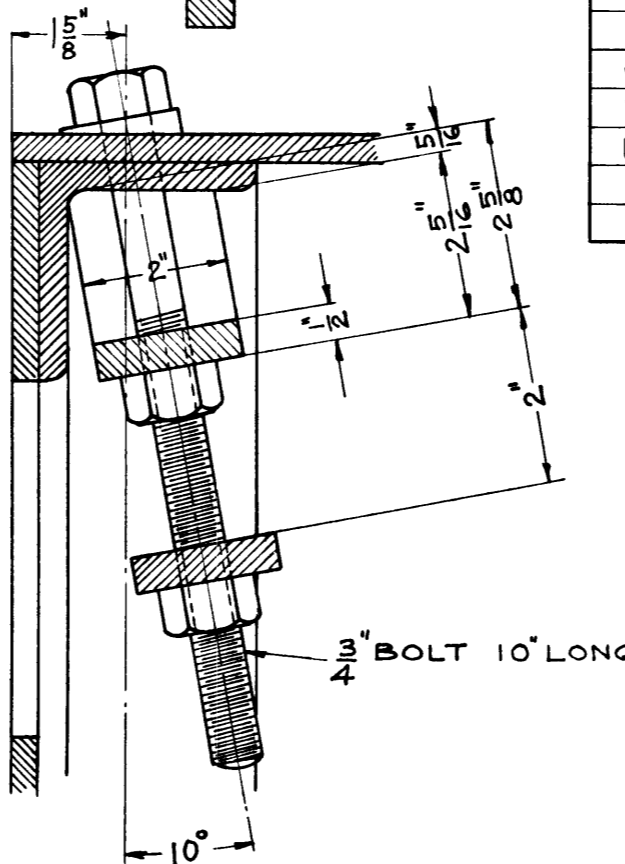


BILL OF MATERIAL					
MARK	DESCRIPTION.	No. REQ.	MARK	DESCRIPTION.	No. REQ.
A	SIDE PLATES $3 \times 24 \times 59 \frac{1}{2}$	2	O	$3 \times 1 \times 64 \frac{1}{4}$ IRON	1
B	BOTTOM PLATE $3 \times 22 \times 59 \frac{1}{2}$	1	P	$3 \times 4 \times \frac{1}{2}$ ANGLE $39 \frac{1}{2}$ LONG	1
C	TOP PLATE $3 \times 12 \frac{1}{2} \times 38 \frac{1}{2}$	1	Q	$3 \times 4 \times \frac{1}{2}$ ANGLE $38 \frac{1}{2}$ LONG	1
D	END PLATES $3 \times 19 \times 40 \frac{1}{2}$	2	R	$3 \times 3 \times \frac{1}{2}$ ANGLE 55 LONG	1
E	POCKET BACK PLATE $3 \times 11 \frac{1}{2} \times 25 \frac{1}{2}$	1	S	$3 \times 3 \times \frac{1}{2}$ ANGLE 53 LONG	1
F	POCKET TOP PLATE $3 \times 10 \frac{1}{2} \times 14 \frac{1}{2}$	1	T	$3 \times 3 \times \frac{1}{2}$ ANGLE $19 \frac{1}{2}$ LONG	1
G	POCKET SIDE PLATES $3 \times 20 \frac{1}{2} \times 25 \frac{1}{2}$	2	U	$3 \times 3 \times \frac{1}{2}$ ANGLES $7 \frac{3}{4}$ LONG	2
H	POCKET FRONT PLATE $3 \times 19 \times 40$	1	V	$3 \times 3 \times \frac{1}{2}$ ANGLES $13 \frac{1}{2}$ LONG	2
I	HOPPER END PLATE $2 \times 17 \frac{1}{2} \times 22$	1	W	$2 \times 2 \times \frac{1}{2}$ ANGLES 18 LONG	2
J	HOPPER BOTTOM PLATE $2 \times 18 \frac{1}{2} \times 22$	1	X	$2 \times 2 \times \frac{1}{2}$ ANGLES 13 LONG	2
K	HOPPER SIDE PLATES $2 \times 18 \times 21$	2	Y	$2 \times \frac{1}{2}$ IRON $15 \frac{1}{2}$ LONG	1
L	HOPPER DOOR PLATE $2 \times 13 \frac{1}{4} \times 22 \frac{1}{2}$	1	Z	$2 \times \frac{1}{2}$ IRON $7 \frac{1}{2}$ LONG	1

ALL STUDS $\frac{3}{8}$ " DIA. (EXCEPT IN FRONT).
 ALL RIVETS IN PAN $\frac{1}{2}$ " DIA.
 ALL RIVETS IN HOPPER $\frac{1}{4}$ " DIA.
 ALL RIVET HEADS INSIDE PAN HAMMERED FLAT.



CORRECT H. Weaver
 MECH'L. ENGR.
 APPROVED J. Flouge
 SUPT. M. P. S. M. O.



LOS ANGELES & SALT LAKE R.R.
 FIRE PAN.

FOR LOS ANGELES JUNCTION R.Y. ENG'S. 101 & 102.

LOS ANGELES, CAL. MAY. 13, 1924.

DRAWING E-1472	
NO.	REVISIONS