

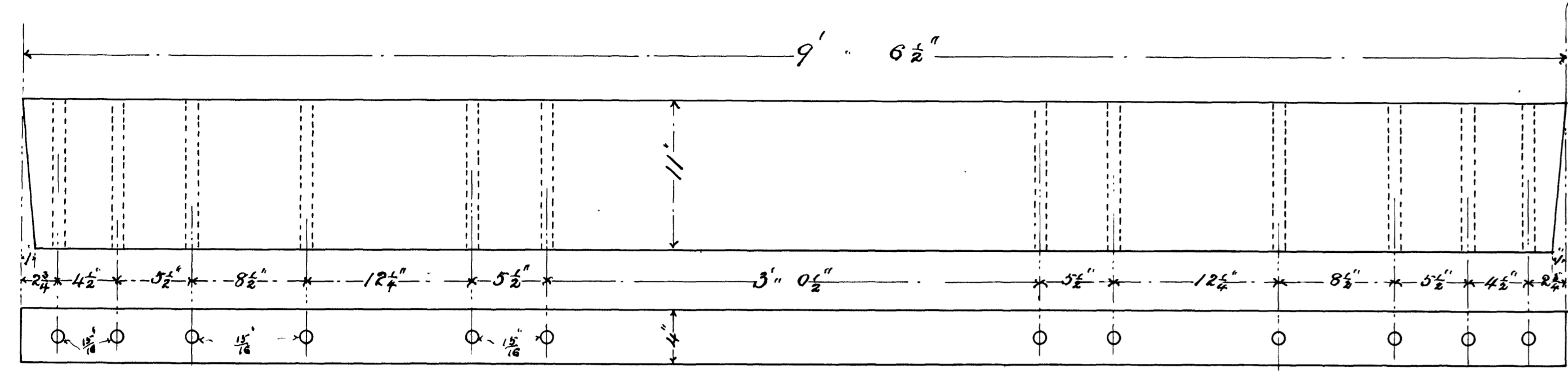
O R AND N O

DETAILS

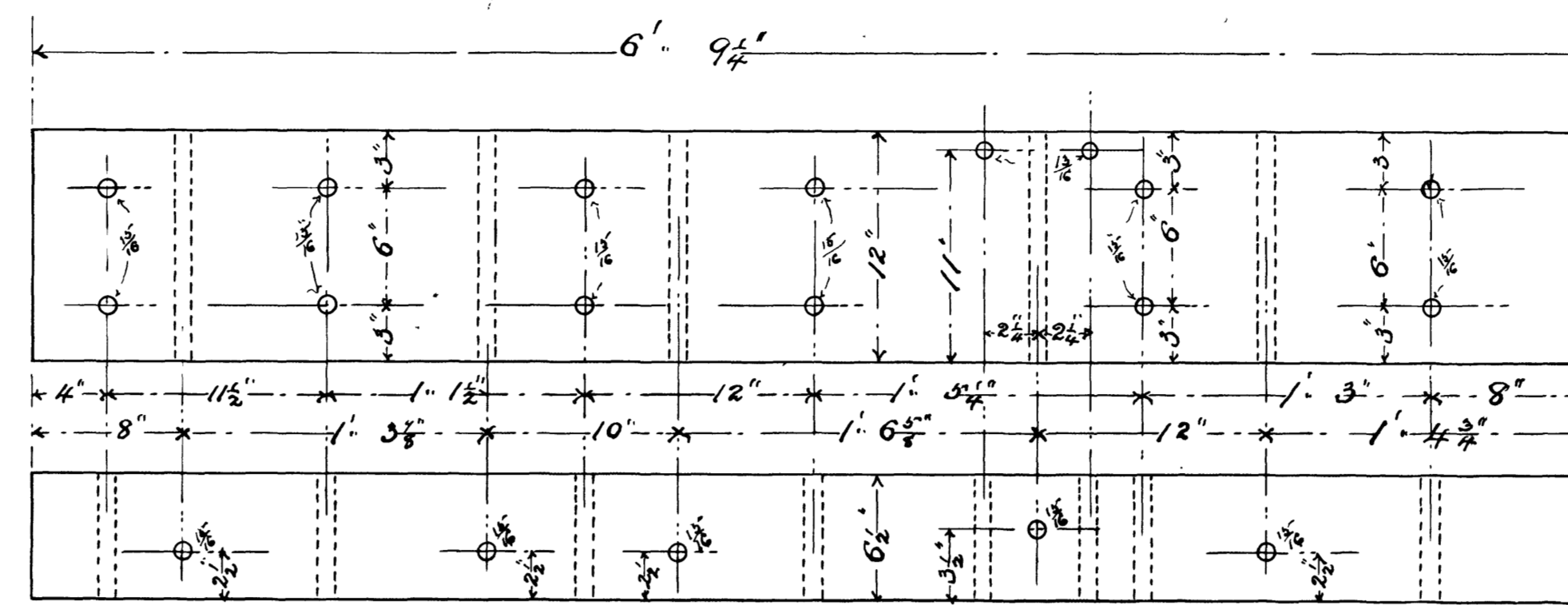
FOR

DERRICK CAR

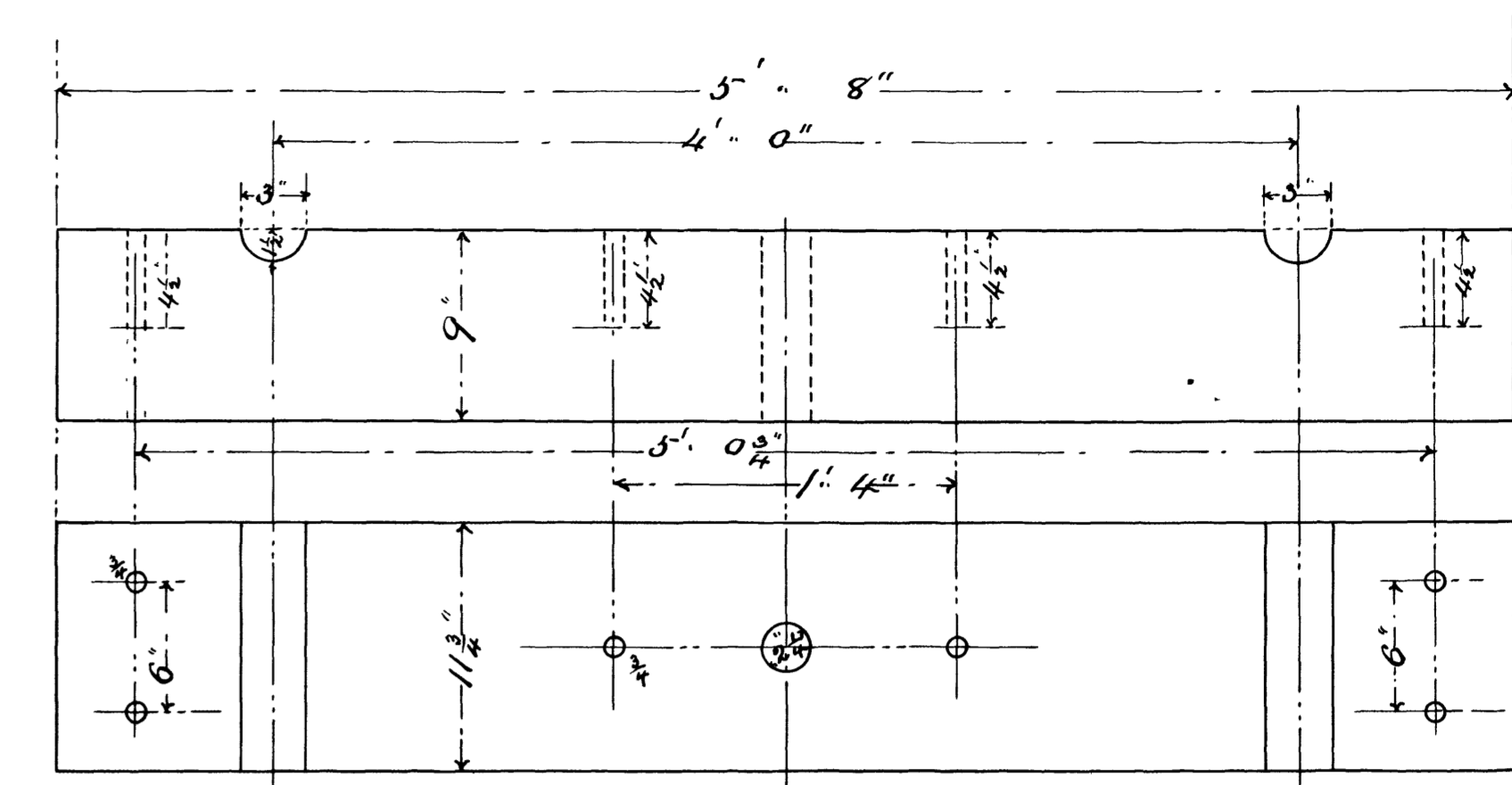
Albina, Oregon, Sept. 1895.



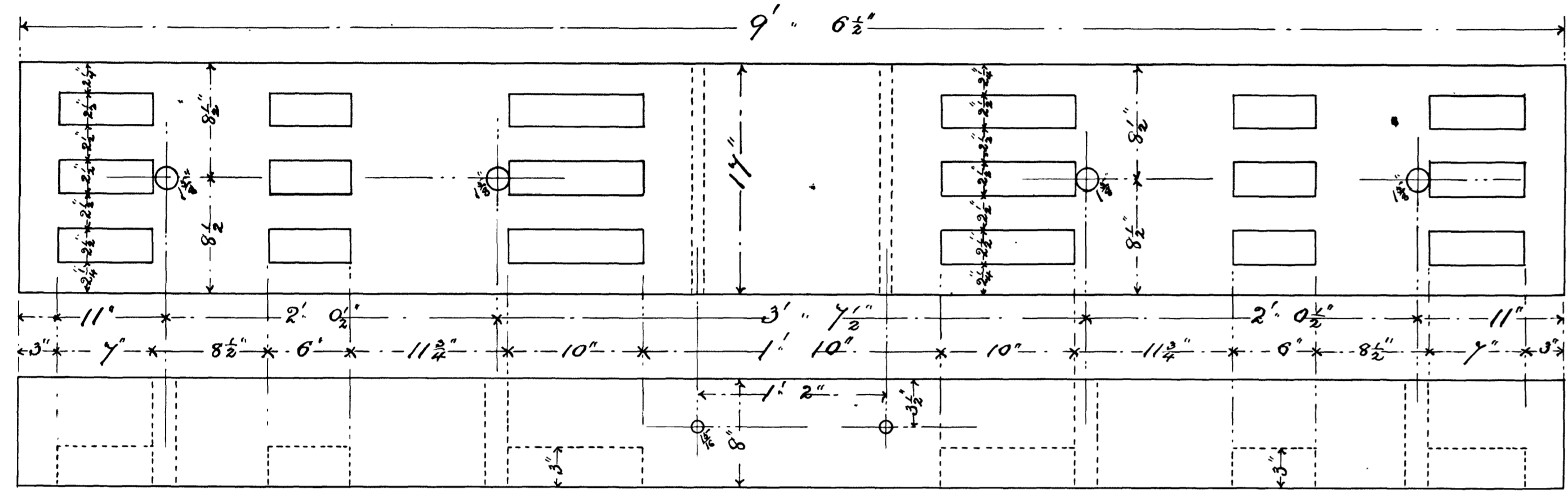
Mast Beam



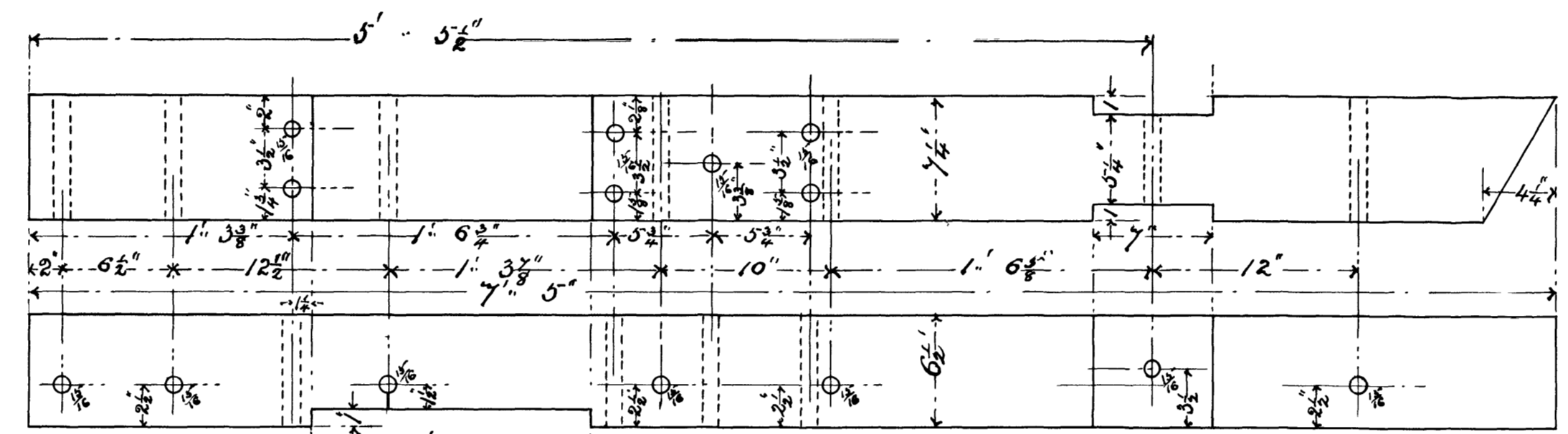
Upper Draft Timber



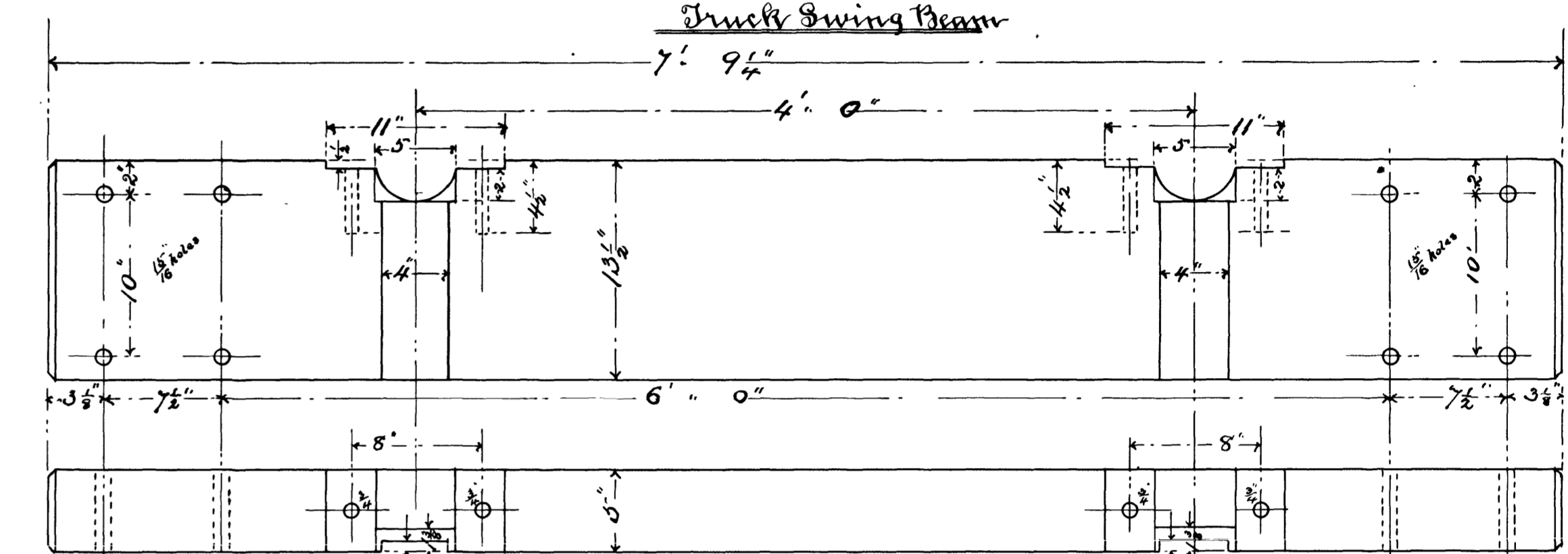
Draft Swing Beam



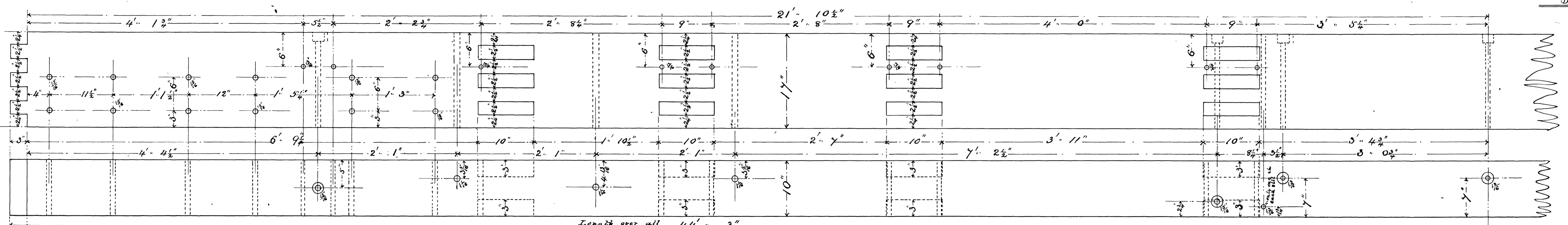
End Sill



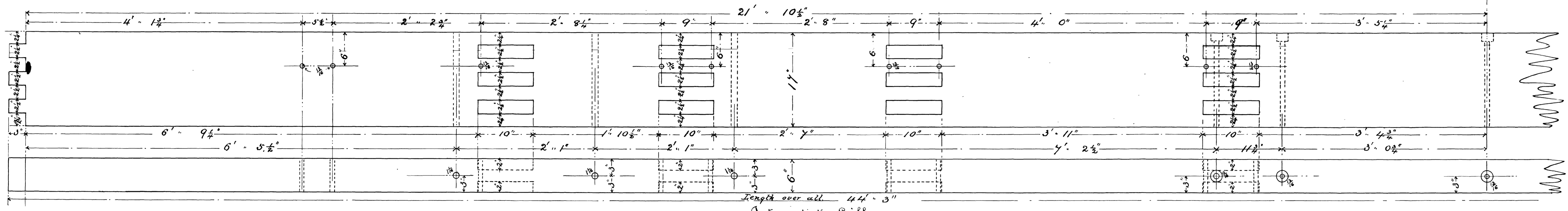
Lower Draft Timber



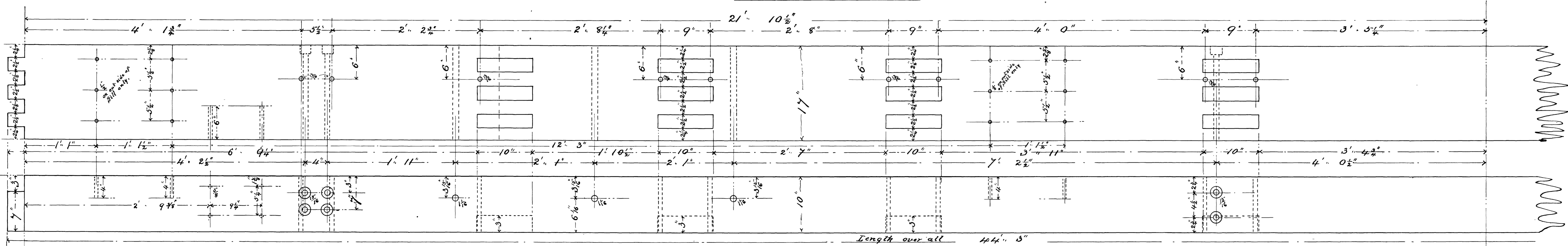
Draft Transom



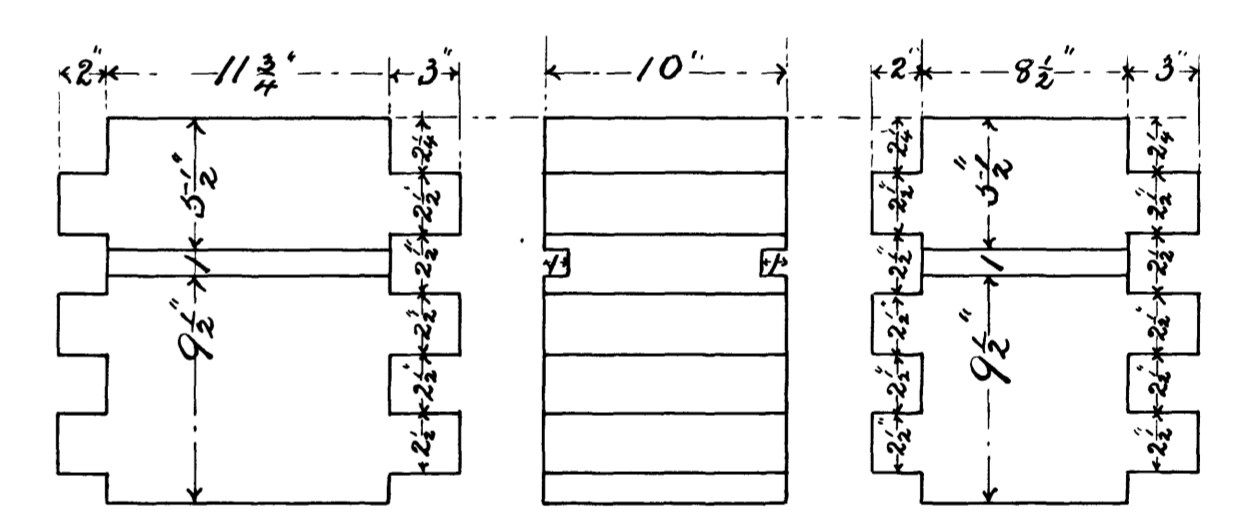
Center Sill



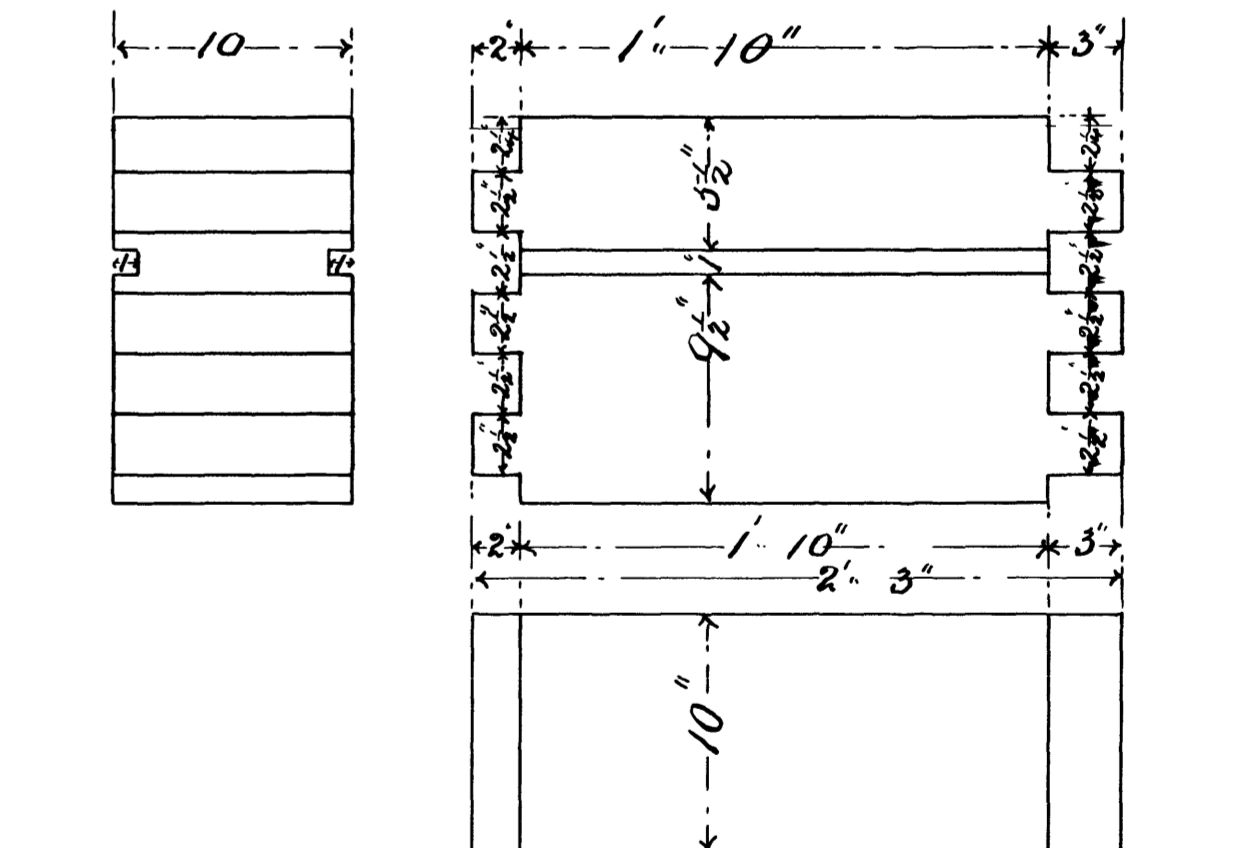
Intermediate Sill



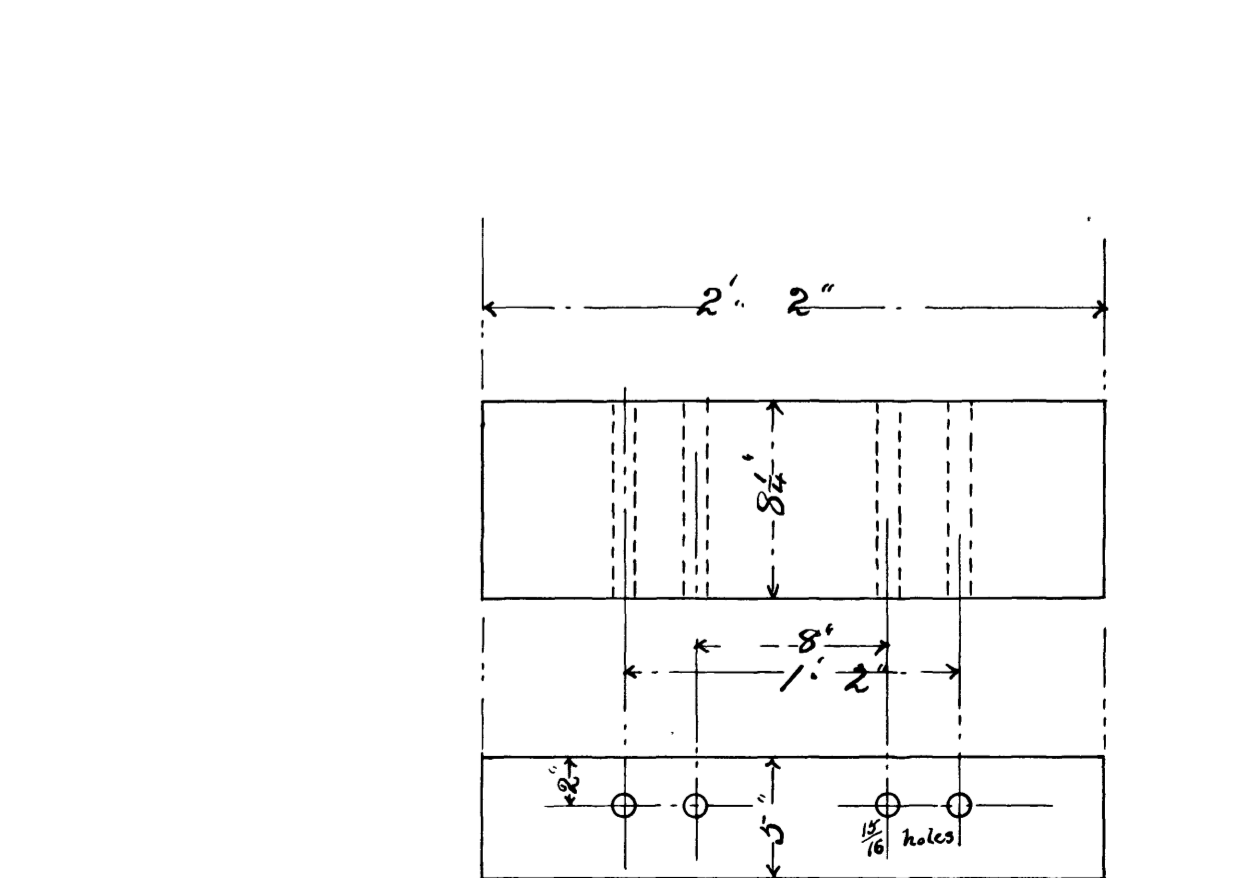
Side Sill



18 Required 4 with grooves on one side



18 Required 4 with grooves on one side



18 Required 2 with grooves on one side