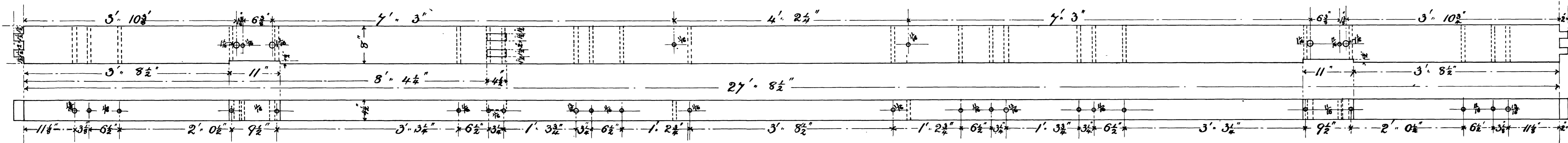
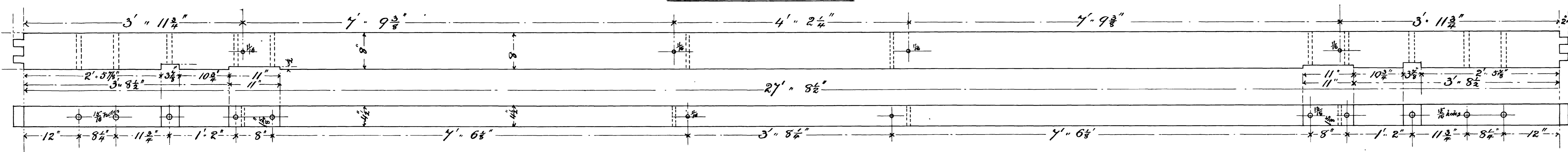


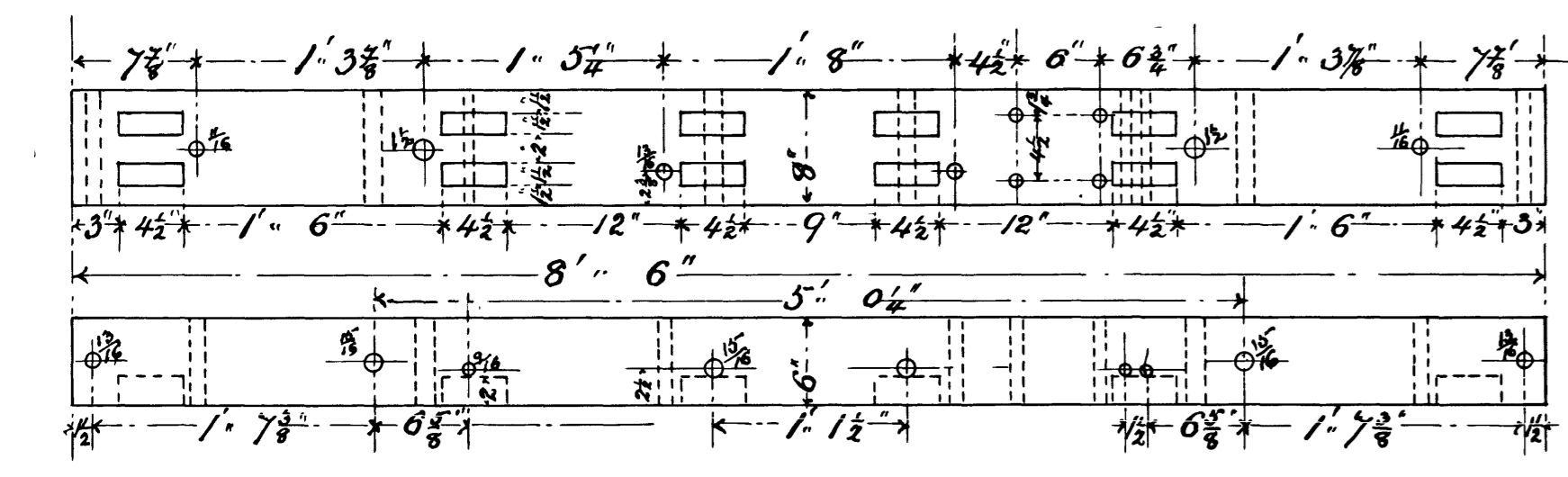
SIDE SILL



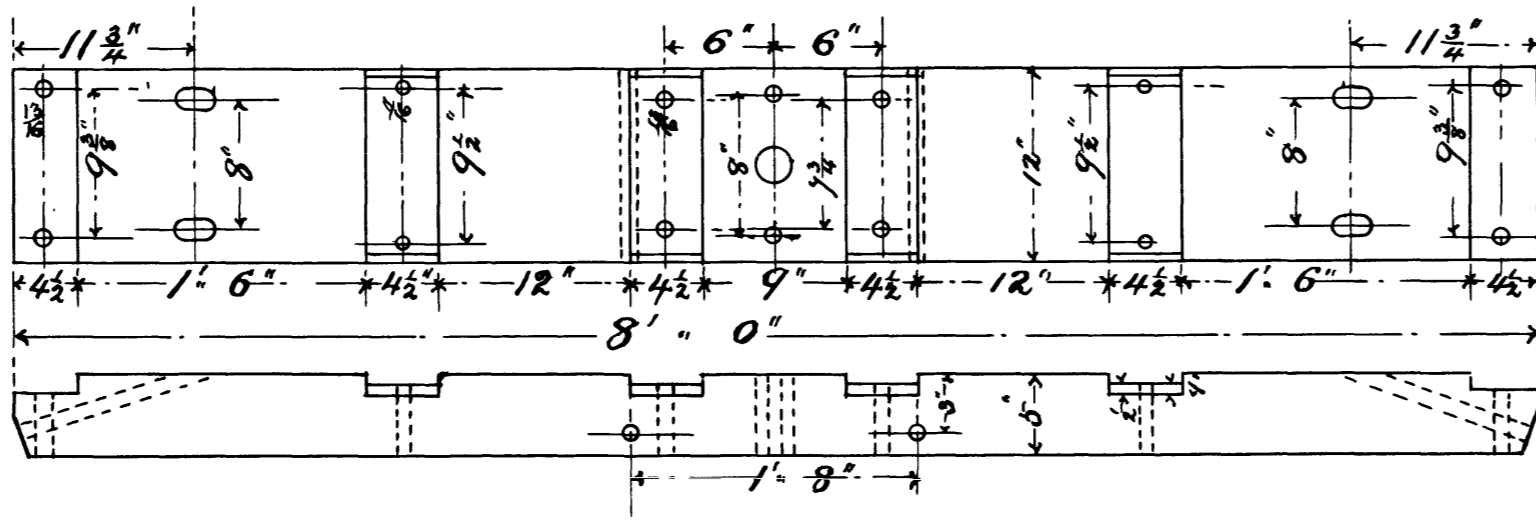
INTERMEDIATE SILL



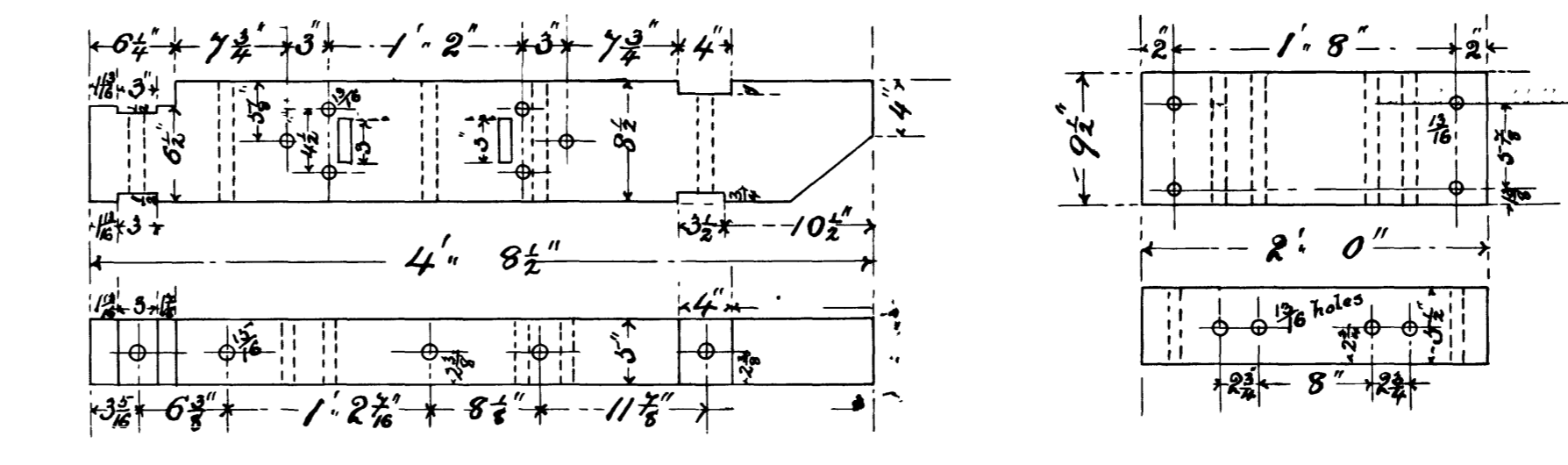
CENTER SILL



END SILL

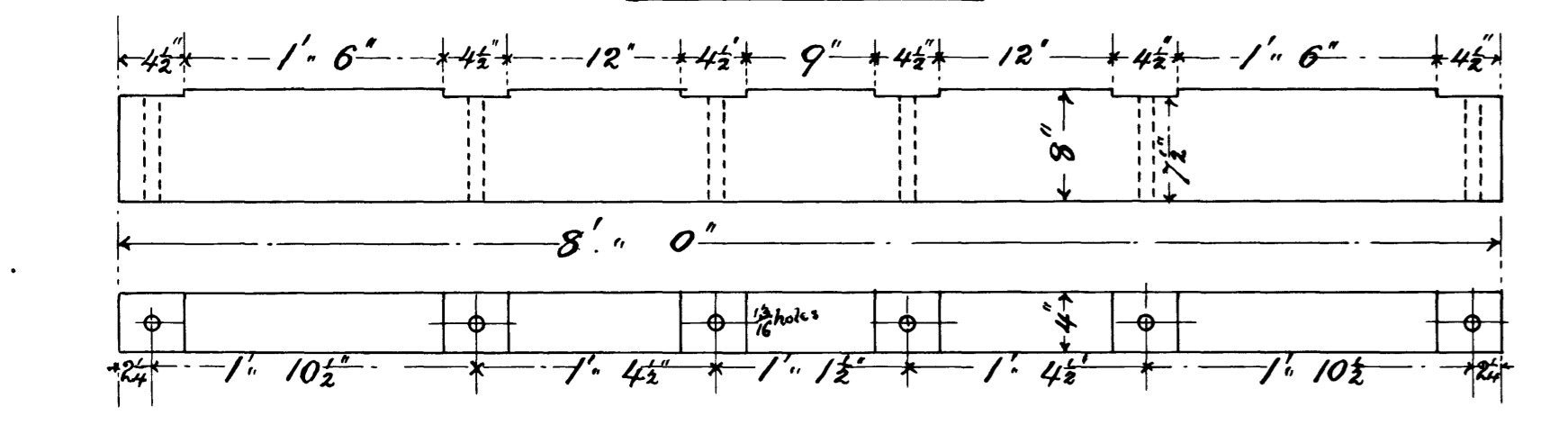


BODY BOLSTER

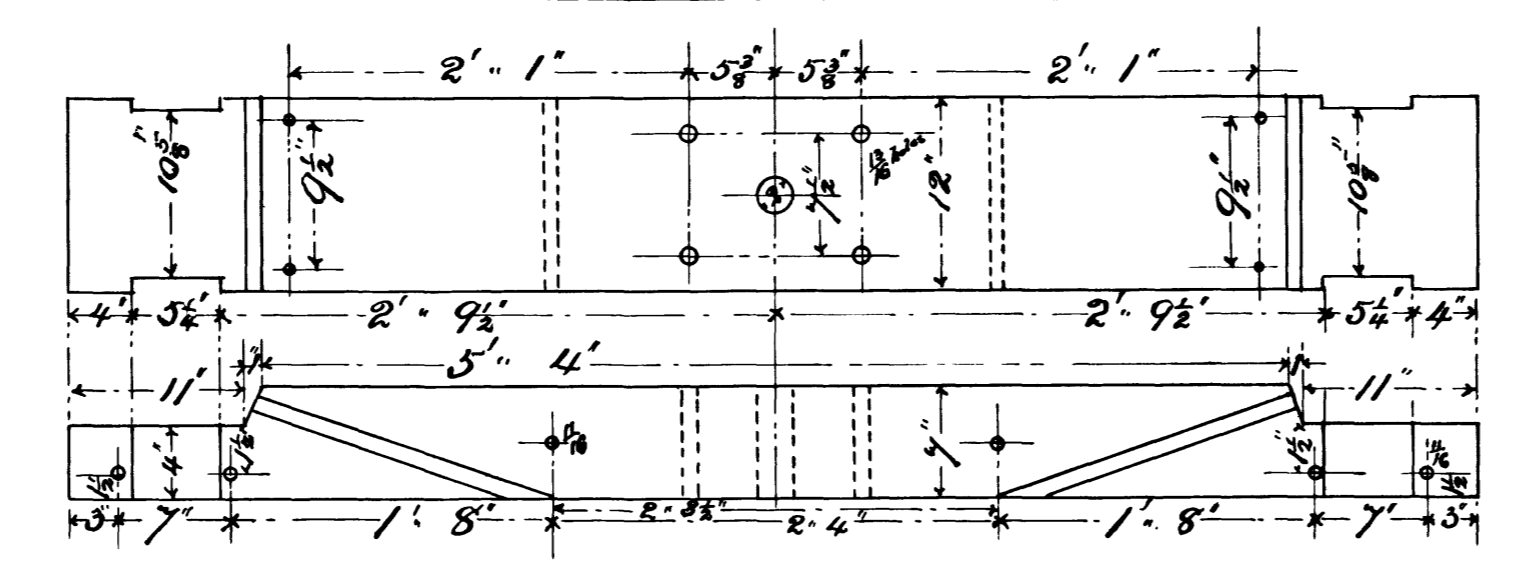


DRAFT TIMBER

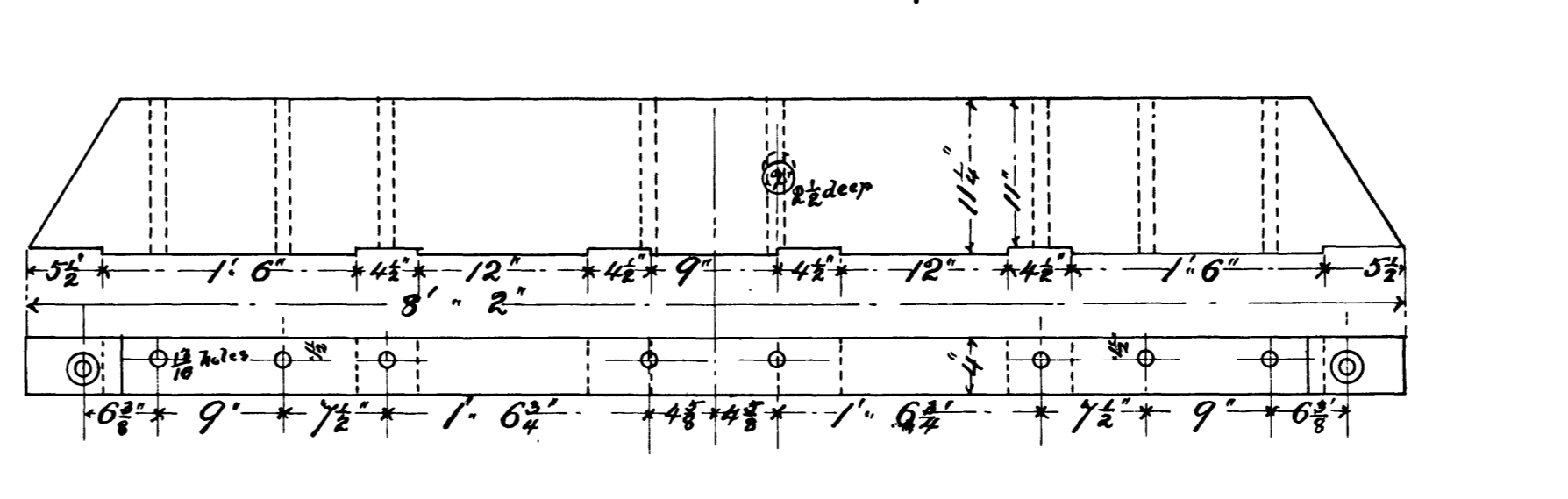
DEAD WOOD



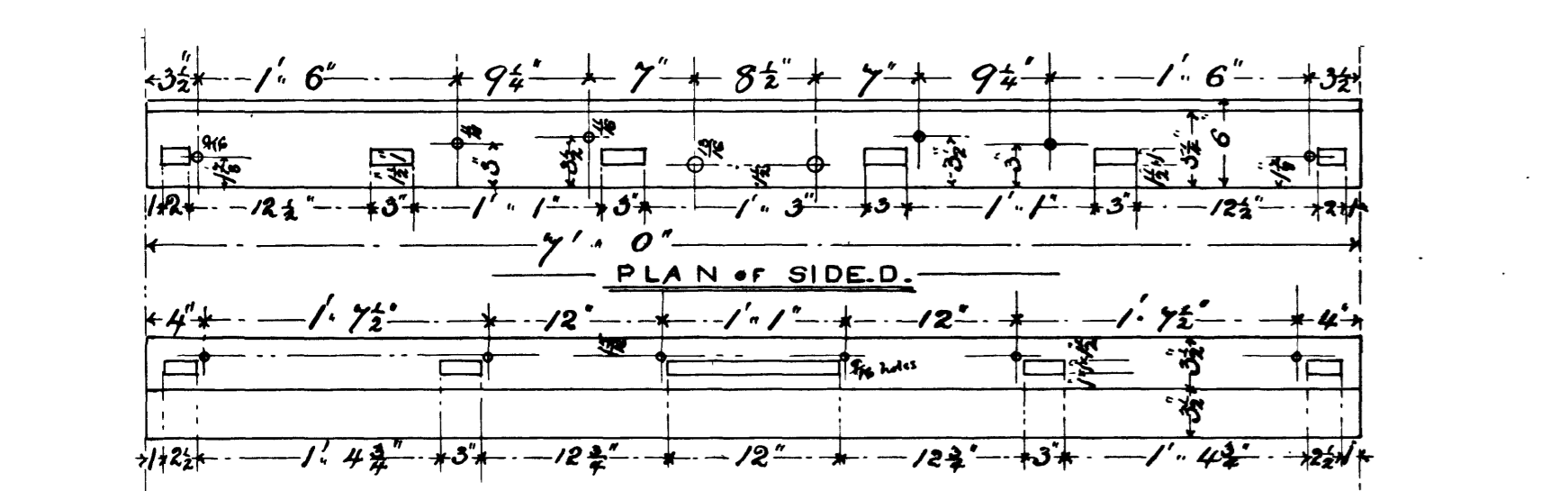
NEEDLE BEAM



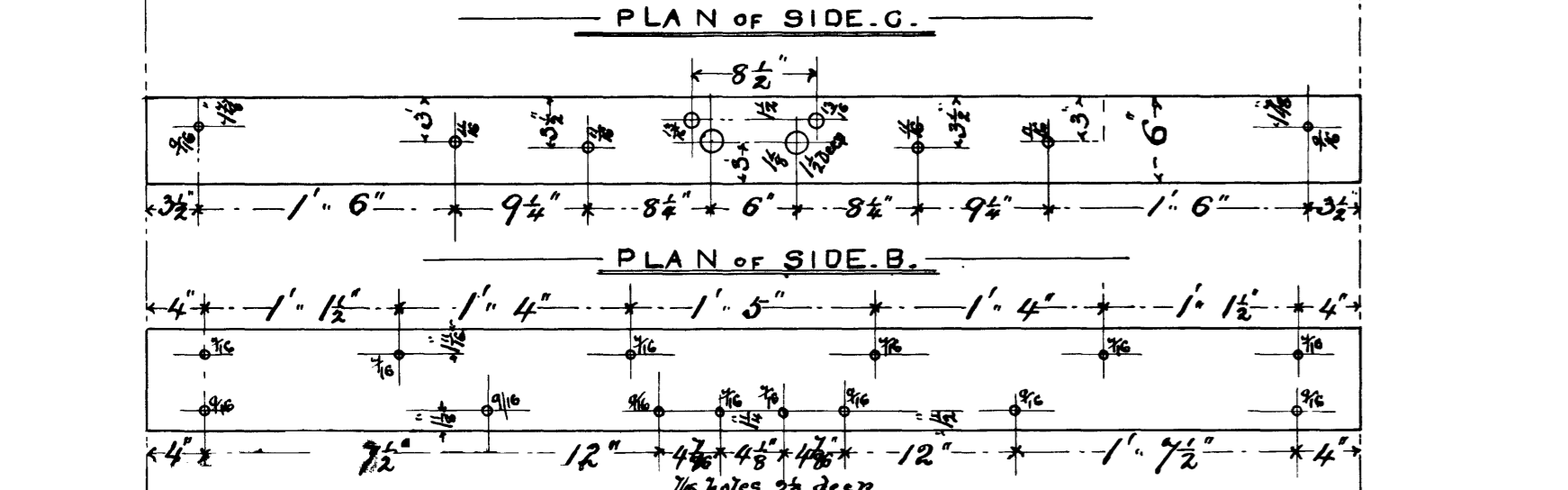
TRUCK BOLSTER



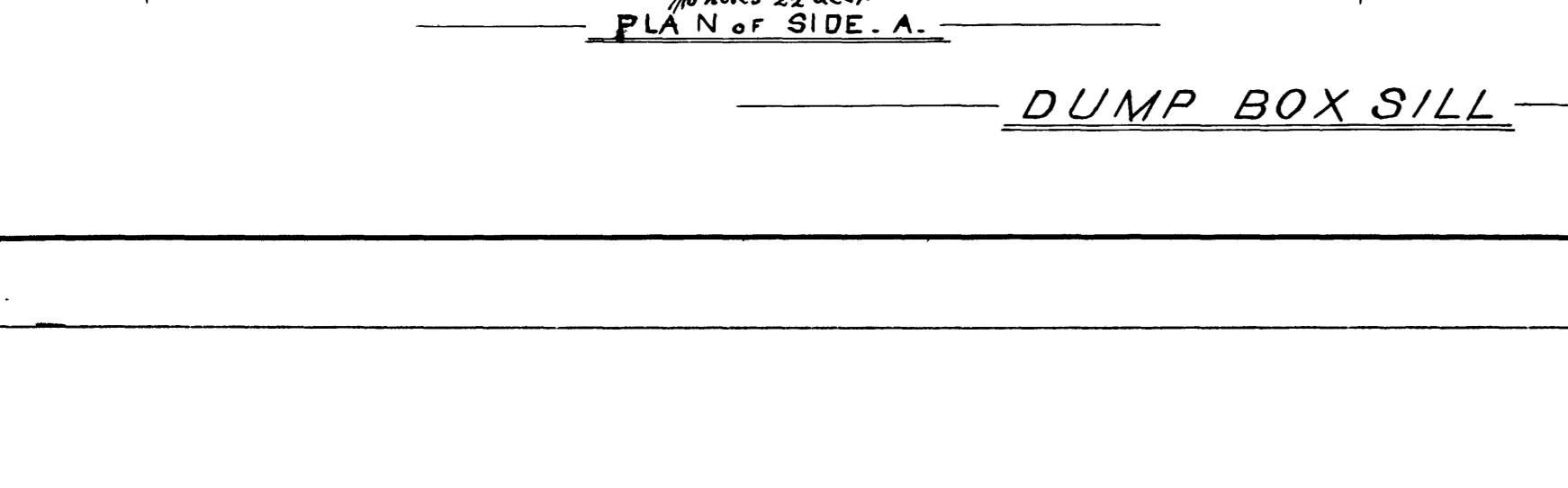
GOOSE NECK TIMBER



PLAN OF SIDE D



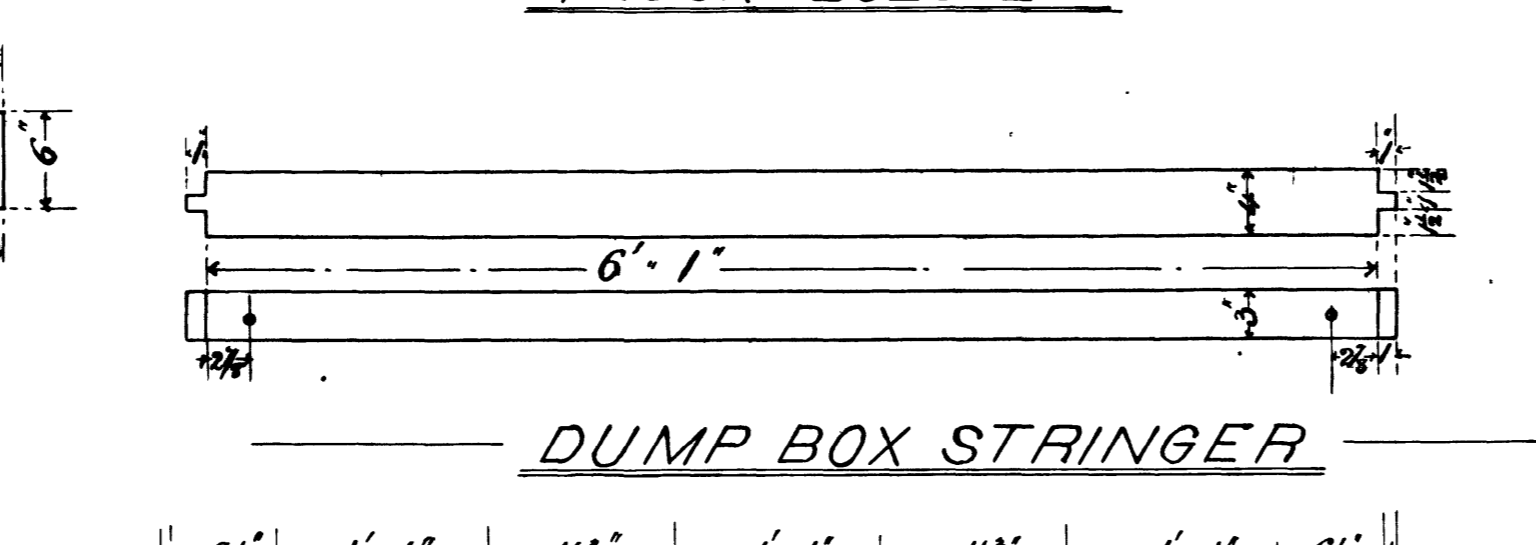
PLAN OF SIDE G



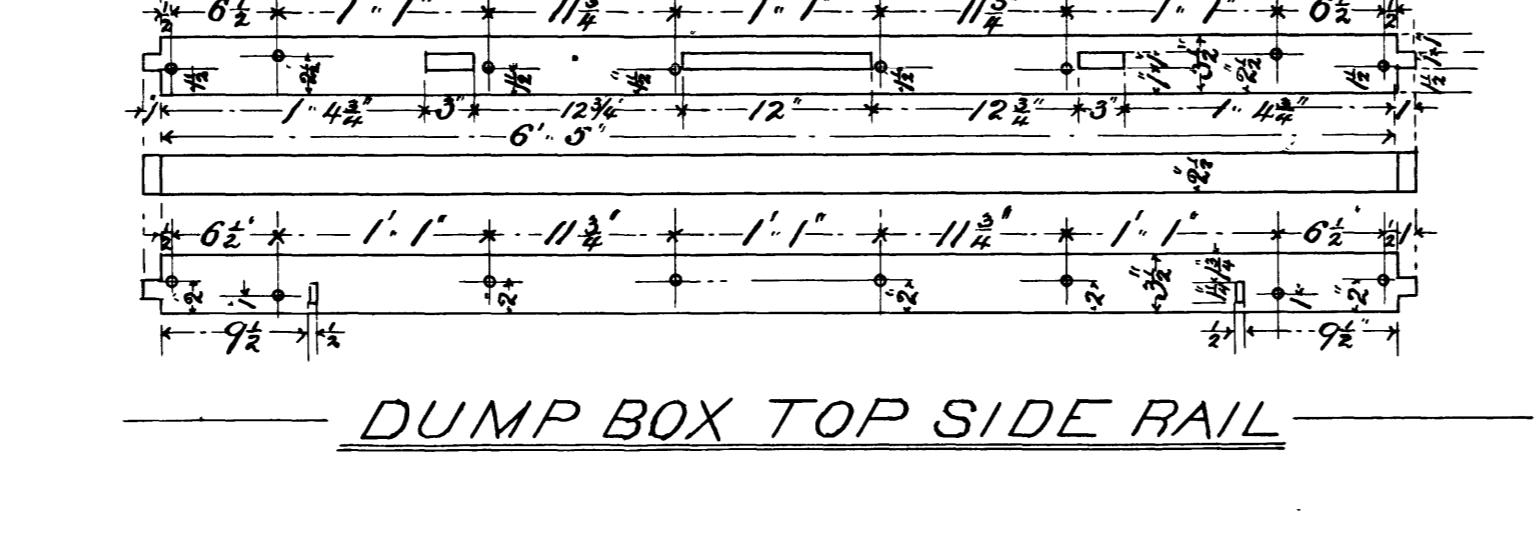
PLAN OF SIDE B



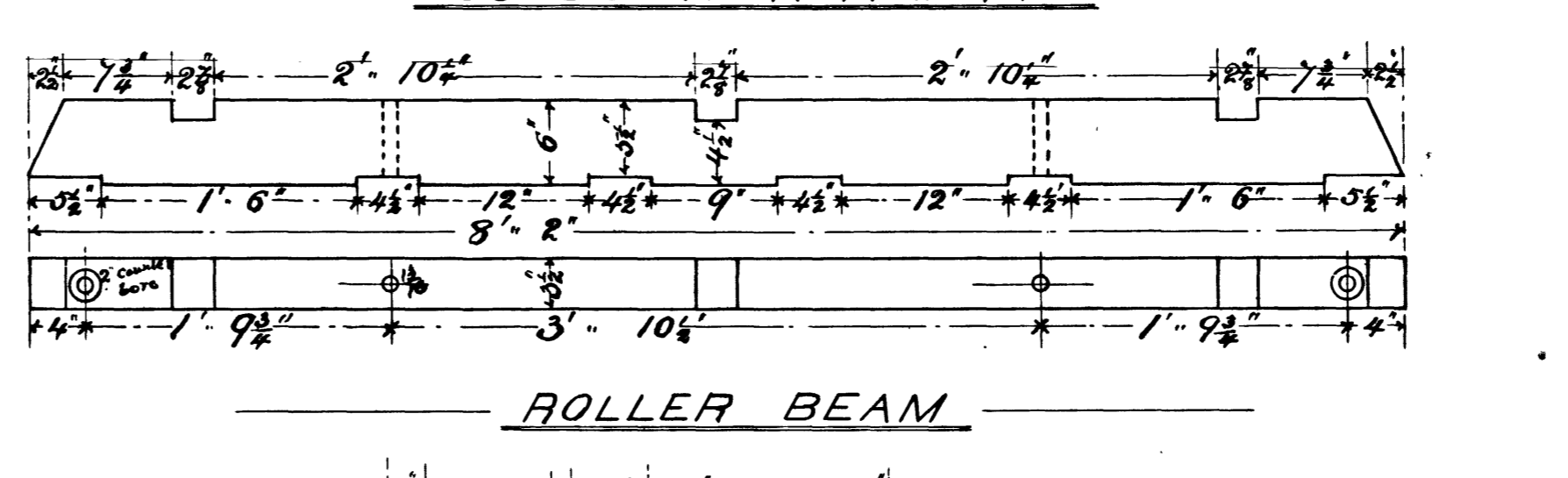
PLAN OF SIDE A



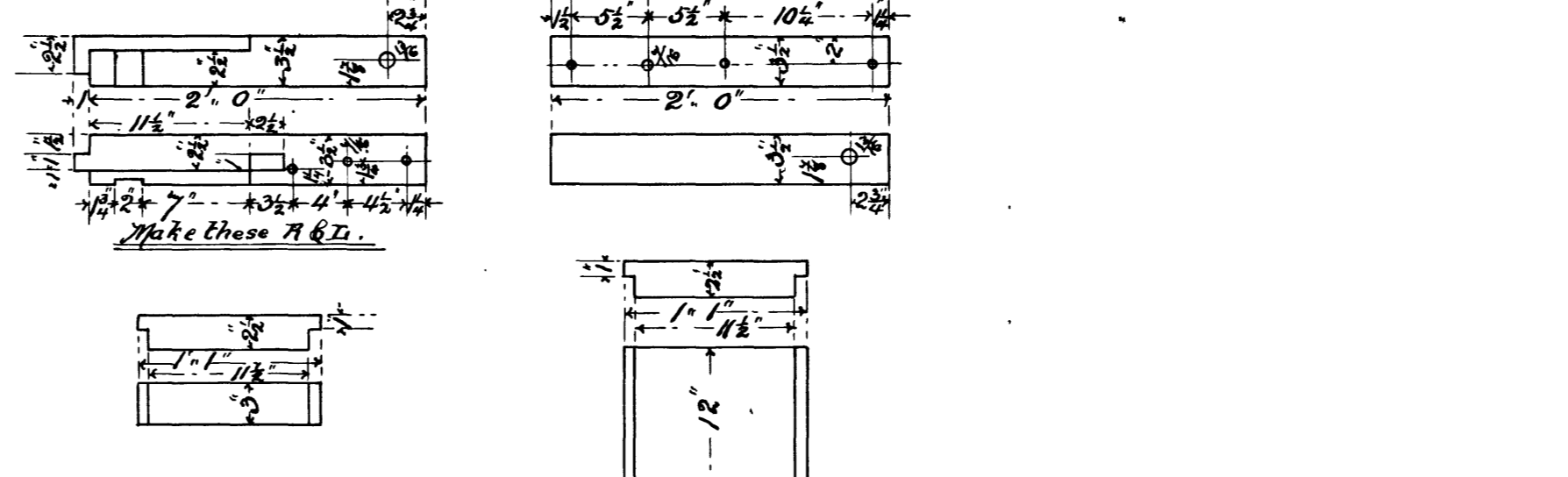
DUMP BOX STRINGER



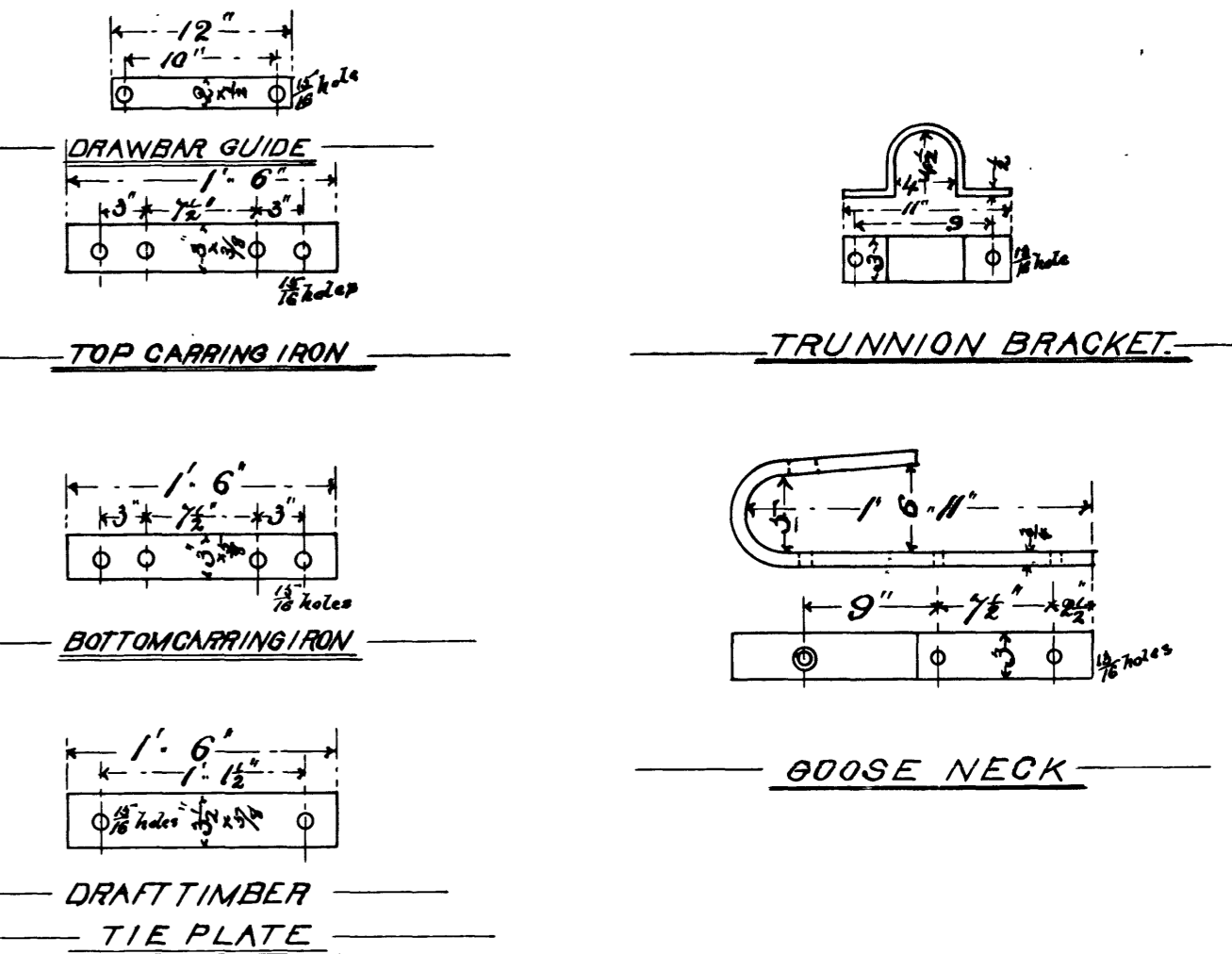
DUMP BOX TOP SIDE RAIL



ROLLER BEAM



DUMP BOX POSTS



LIST OF PATTERNS.

	7 1/2		7 1/2
Draw Bar	S. 18	Truss truck bolster guide	G. 21
" " stop	" 19	Truck bolster guide block	" 22
Truss saddle (needle beam)	G. 9	" " " " "	" 22 1/2
" " (transom)	" 12	Brassos	G. 23
Roller bearing	H. 25	Brake lever jaw	G. 24
" " "	H. 26	" Wheel	" 25
" " Track	H. 23	"atchet	S. 22
" " "	" 23 1/2	" dog	" 21
Trunnion	G. 44	" strap stop	G. 66
Oil Box	G. 94	" " guide	S. 11
" " "	" 94 1/2	" head	" 13
" " Cover	" 80	" " shoes	" 14
Side bearing < truck >	" 19		
Truck center plate	" 15		
Body " "	" 16		

O R A N C O  
 B.G. DUMP CARS.  
 DETAILS.  
 Scale 1" = 1'  
 ALBINA OREGON  
 MAY 1892.

No. of Sheets, 2. Sheet No. 2.

