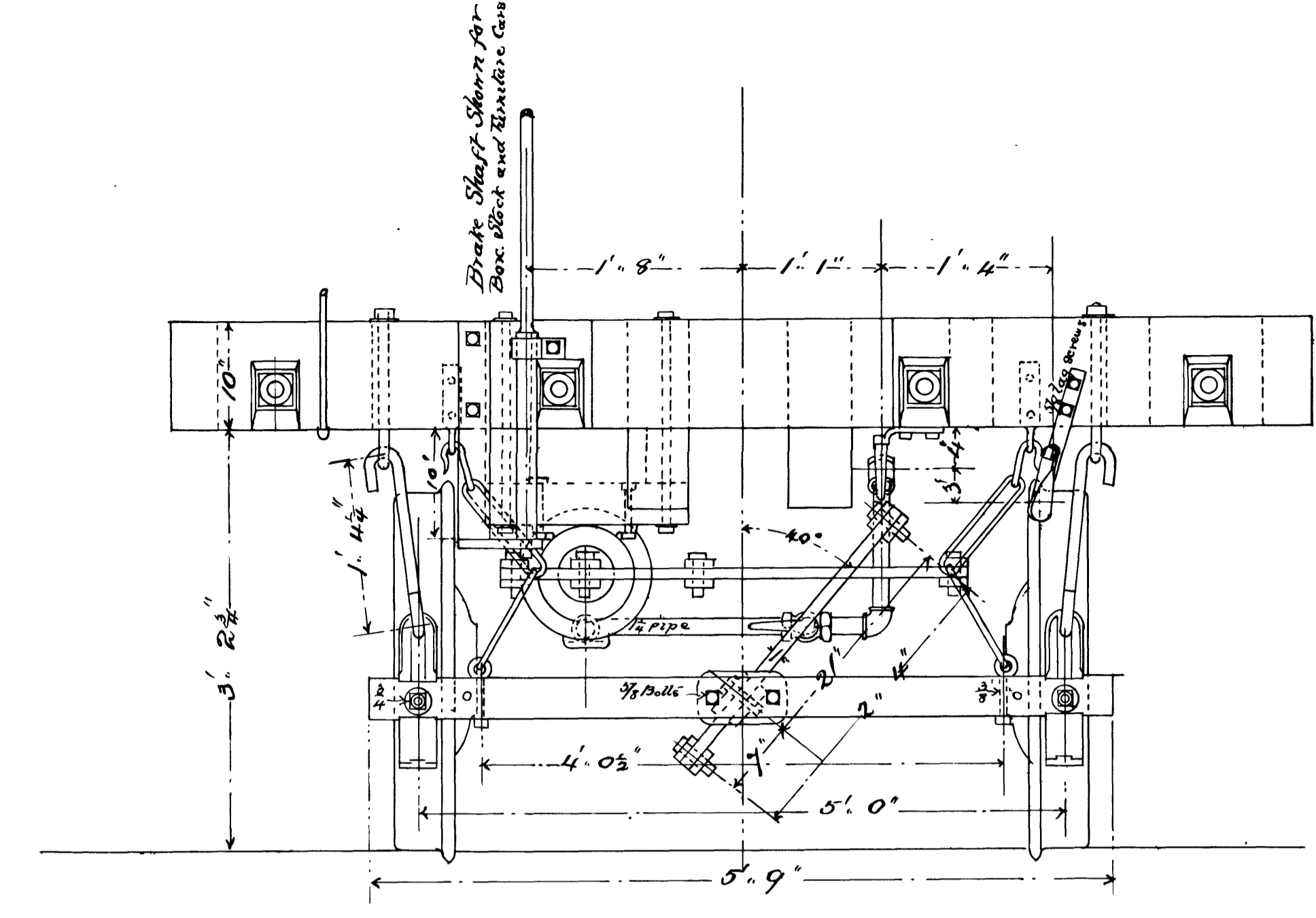


Note: Brake should be adjusted to give piston 0 ins. travel when connected as shown, with 70 lbs. air pressure.

Top of Rail.

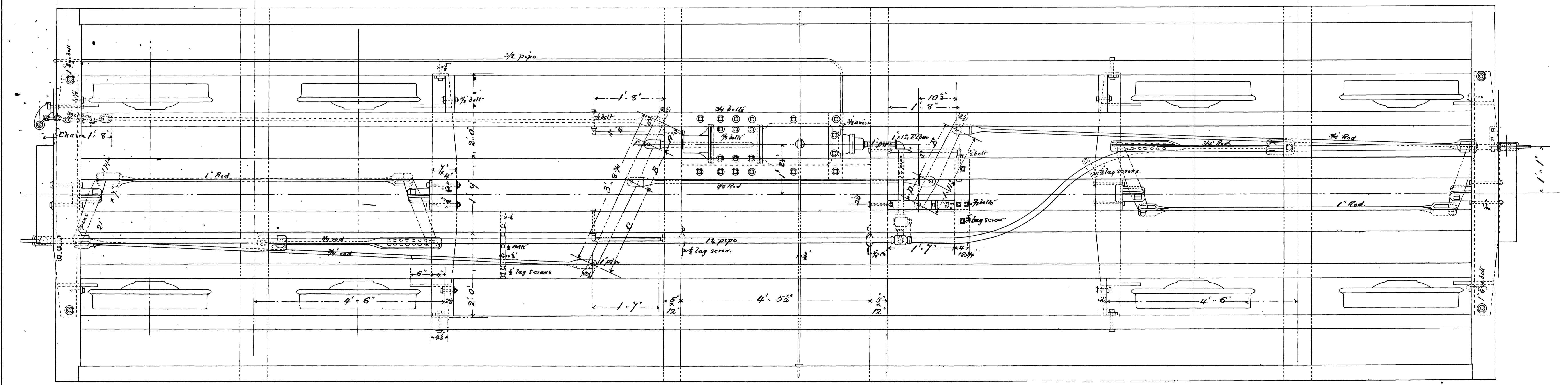
All holes drilled 1 1/2 ins diameter  
All pins 1 inch in diameter.



Note: Table shows lengths of Cylinder and Floating Levers proportionate to (right) weight of Car

Height of Car	Cylinder Lever			Floating Lever	
	A	B	C	D	E
23000 to 25000	4' 10 1/2"	27 1/2"	6 1/2"	17 1/2"	17 1/2"
25000 " 27000	4' 10 3/4"	27"	6 3/4"	17"	17"
27000 " 29000	4' 11 1/4"	26 3/4"	7 1/8"	16 3/8"	16 3/8"
29000 " 31000	4' 11 3/4"	26"	7 1/4"	16 1/4"	16 1/4"
31000 " 33000	4' 12 1/4"	25 1/2"	7 3/8"	16 1/8"	16 1/8"
33000 and over.	4' 12 3/4"	25"	8 1/8"	16 1/4"	16 1/4"

New York Air Brake 'No 6'  
Westinghouse Air Brake Schedule 'H'



List of Pattern Numbers

For Box Furniture and Stock Cars	
Brake Block.	8434.
" Shoe.	6920.
" Wheel.	7120.
" Part.	7128.
" Ratchet Wheel.	7081.
" Lever Fulcrum, Right.	8595.
" " " Left.	8596.
Dead Lever Stop Casting.	7146.
Intermediate Brake shaft Guide.	7115.
Upper Brake shaft Bearing.	7111.
For Coal and Flat Cars.	
Brake Block.	8434.
" Shoe.	6920.
" Wheel.	7120.
" Shaft Guide Casting, Lower.	7553.
" " " Upper.	7152.
" Part.	7128.
" Ratchet Wheel.	7081.
" Shaft Drum.	7552.
" Lever Fulcrum, Right.	8595.
" " " Left.	8596.
Dead Lever Guide Casting.	7148.

**O R & N CO**  
AUTOMATIC QUICK ACTION AIR BRAKE

FOR  
60000 LBS. CAP'Y. FREIGHT CARS

Office of Master Mechanic  
Astoria Oregon July 1898

Scale 1" = 1 ft.

Approved *J. Abraham*  
Master Mechanic

